



ASSESSMENT SCHEDULE,
POLICY & PROCEDURES

YEAR 11 | 2021

Table of Contents

Section 1: Policy	4
General	4
PRELIMINARY HSC COURSE ELIGIBILITY	4
REQUIREMENTS FOR YEAR 11 AND 12	4
Guidelines for Satisfactory Completion of Year 11 Courses.....	5
Part A – NSW Education Standards Authority, (NESA) Guidelines	5
Part B – School Guidelines	5
'N' Determinations	7
Assessment Processes	8
The School's Responsibilities	8
Student Responsibilities	8
Non-Completion of Assessment Tasks.....	9
Criteria for Teachers Giving Substitute Tasks	12
School Examination Policies and Processes	13
Before the exam.....	13
During the exam	13
After the exam	13
Reporting Process.....	14
Satisfactory Completion of Courses	14
Section 2.....	15
Year 11 Assessment Schedule 2021	15
Creative & Performing Arts.....	16
Dance	17
Music.....	18
Visual Arts.....	19
Visual Design.....	20
English	21
English - Advanced	22
English – Extension 1	23
English – Standard	24
English – Studies	25
Human Society and Its Environment (HSIE)	26
Ancient History.....	27
Business Studies.....	28
Legal Studies.....	29
Modern History	30
Society & Culture	31
Language.....	32
French Beginners	33
Mathematics	34
Mathematics Advanced.....	35
Mathematics Standard 1 and Standard 2.....	36
Mathematics Standard 1 - Mathematics in Trade Pathway	37

Mathematics Extension 1	38
Personal Development, Health & Physical Education.....	39
Community & Family Studies	40
Personal Development, Health & Physical Education	41
Sport, Lifestyle & Recreation	42
Science	43
Biology	44
Chemistry	45
Earth & Environmental Science	46
Marine Studies	47
Physics.....	48
Technology & Applied Studies (TAS)	49
Engineering Studies	50
Food Technology	51
Industrial Technology – Graphics.....	52
Industrial Technology – Timber Products & Furniture Technologies	53
Information, Processing & Technology	54
Textiles & Design	55
SVET	56
Business Services	57
Construction.....	58
Hospitality – Food & Beverage	59
Misadventure Application Form	60
Year 11 Assessment Calendar 2021	63

Section 1: Policy

General

This book contains an outline of the Kincumber High School Year 11 Course Assessment Policy, and the assessment procedures for each of the courses offered at Kincumber High School, for the 2021 Year 11 Course cohort.

The school assessment policy emphasises the importance of meeting assessment requirements, especially deadlines for submission or completion of work, and the consequences of failing to do so.

The procedures for each course will specify the nature of assessment tasks, and the approximate dates on which they will be due.

PRELIMINARY HSC COURSE ELIGIBILITY

To be eligible for the award of this certificate, students must fulfil the course requirements and restrictions, and the rules and regulations, as set down by the NSW EDUCATION STANDARDS AUTHORITY. It is expected that all students: -

- will have satisfactory attendance and progress,
- will study appropriate courses as approved by the Board,
- will complete the requirements of each course, including any necessary oral, practical or project work,
- will have performed the tasks in the school's assessment program in each course.
- will sit for any examination set as part of the course.
- will complete the All My Own Work program prior to course entry in February 2021.

REQUIREMENTS FOR YEAR 11 AND 12

In order to complete the Year 11 and HSC courses, students must:

Satisfactorily complete courses that meet the pattern of study required by the NSW Education Standards Authority (a minimum of 12 units in Year 11 and a minimum of 10 units in the HSC course – see pattern of study below)

- a) Sit for and make a serious attempt at the Year 11 and HSC exams
- b) Follow the course developed or endorsed by the NESA.
- c) Apply themselves with diligence and sustained effort to all of the set tasks and experiences provided in the course by the school
- d) Achieve some or all of the course outcomes

Your pattern of study must include at least:

- a) 6 units of Board Developed Courses
- b) 2 units of a Board Developed course in English
- c) 3 courses of 2 units or greater
- d) A minimum of 4 different subjects

In addition, a maximum of 6 units of courses in Science can contribute to your HSC.

Guidelines for Satisfactory Completion of Year 11 Courses

Part A – NSW Education Standards Authority, (NESA) Guidelines

These are contained in the Assessment Certification and Examination Manual (ACE) which is distributed to each school by (NESA), and contains relevant information relating to the Higher School Certificate.

A student will be considered to have satisfactorily completed a Year 11 course if in the Principal's view, there is sufficient evidence that the student has:

- followed the course developed or endorsed by the Board; and
- applied themselves with diligence and sustained effort to the set tasks and experiences provided in the course by the school; and
- achieved some or all of the course outcomes.

Whilst the NESA does not mandate attendance requirements, principals may determine that, as a result of absence, the course completion criteria may not be met. Clearly, absences will be regarded seriously by principals, who must give students early warning of the consequences of such absences.

Part B – School Guidelines

Attendance – students need to maintain an 85% attendance record. This is less than 30 days per calendar year. If a student's attendance falls below this figure, and causes their teacher(s) concern, they will be required to show their ability to satisfactorily complete the course(s). Students will be interviewed by a panel consisting of the Deputy, Head Teacher Welfare, and the classroom teacher(s). Students will be required to receive prior written warning if teachers feel their attendance is causing concern. The final determination of satisfactory attendance will be at the Principal's discretion.

Completion of Year 11 Tasks – students will be required to attempt and complete to the best of their ability at least 50% of the total Year 11 Assessment tasks. However, failure to complete any Year 11 Task may lead to the student being recommended for an "N" determination for that particular course.

Completion of 'Non-Preliminary' Tasks – (includes anything the classroom teacher feels is a prerequisite for a student to satisfactorily complete the course for example tasks such as: set homework, assignments, practical work, etc). Students will need to complete ALL such tasks to the satisfaction of the classroom teacher. Students causing concern in this area will be issued with a series of warning letters, indicating lack of diligence and sustained effort in that course(s). Failure by the student to improve their application and effort may lead to the student being recommended for a "N" determination in that particular course.

Completion of Compulsory Tasks - Some courses have compulsory components, eg practical work requirements, which must be completed to a satisfactory standard, before a student is allowed to proceed to the HSC course. If a student is causing concern in this area, they will be issued with a series 'N' Award of warning letters. A student who fails to address concerns stated in an 'N' Award warning letter will be recommended for a "N" determination for that particular course(s).

At the completion of each Year 11 course each student will be deemed to have completed the course:

- a. **Satisfactorily** – This will allow the student to begin the HSC component of the course.

OR

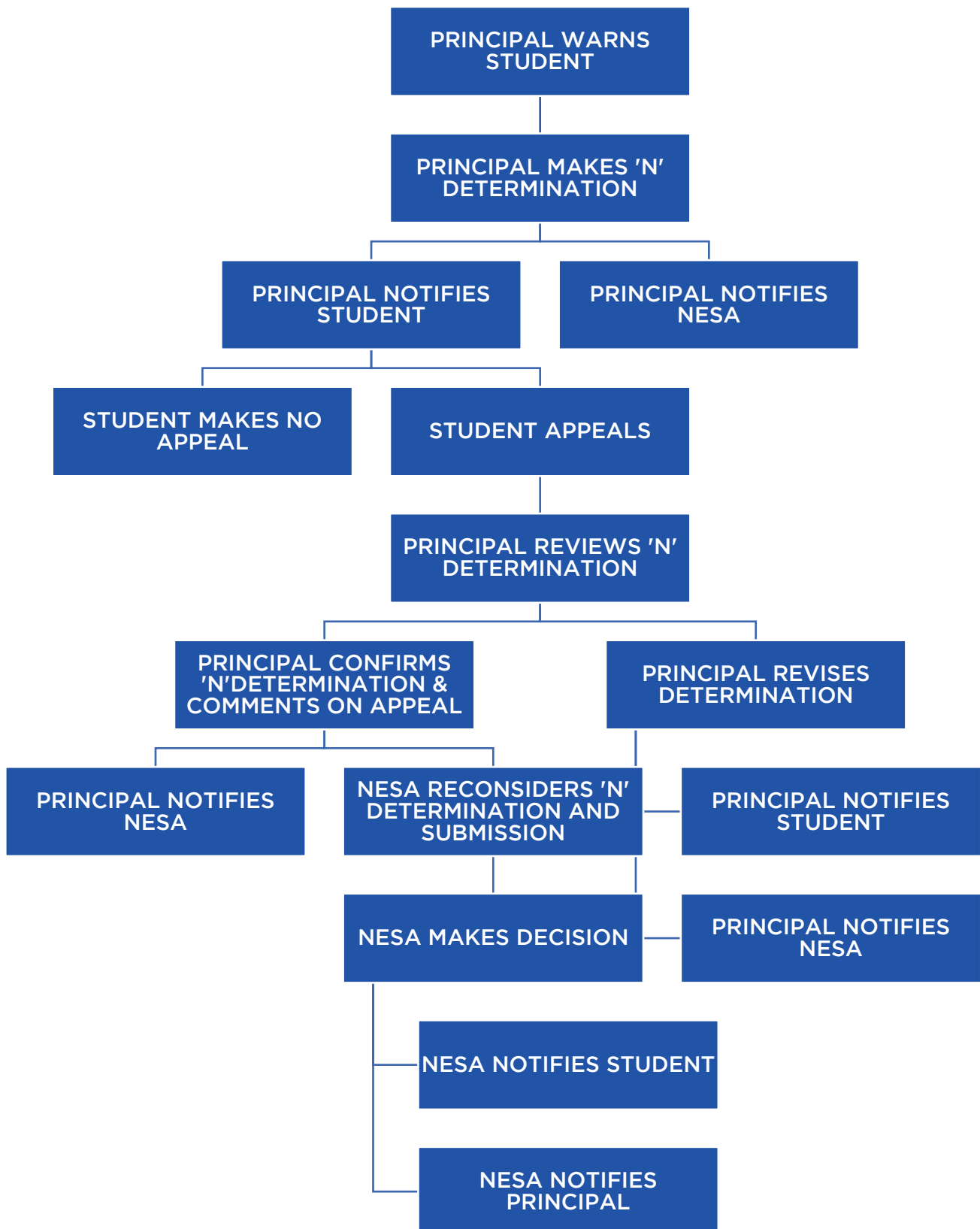
- b. **NON ('N') Award** – This will prevent a student from beginning the HSC component of the course and will involve a reselection of subjects. It can have a serious effect on a student's study pattern, particularly for students wanting an ATAR (Australian Tertiary Admission Rank). Such students are urged to thoroughly understand such consequences, by talking with the classroom teacher, head teacher or career advisor. (NOTE: such determinations will appear on each student's "Preliminary Course Record of School Achievement"- RoSA)

OR

- c. **Provisionally** – This determination will be given if the classroom teacher feels that the student has missed a task(s), but had a valid excuse for doing so. The student will be given an 'N' Award but given the opportunity to complete the task(s), or alternate task(s) so that the student's status can be changed to satisfactory. These students will be allowed to begin the HSC component of the course on the understanding that all provisional tasks will be completed to a satisfactory standard within an agreed time.

'N' Determinations

The following flow chart indicates the procedures, which will be followed after the Principal makes an "N" determinations



Assessment Processes

You are required to complete school-based assessment tasks for most of the Board Developed HSC Courses you study.

School-based assessment counts for 50% of your overall mark in each course and is reported on your Higher School Certificate Record of Achievement.

School-based assessment tasks are designed to measure performance in a wider range of objectives than may be tested in an examination. Assessment tasks may include tests, written or oral assignments, practical activities, fieldwork and projects. The assessment requirements for each Board Developed Course are set out in each syllabus.

For VET courses, you are assessed on your competency in performing work related tasks. This counts towards your VET qualification but not towards a HSC mark. Students sitting the final HSC examination in a Category B VET course will be awarded a HSC mark which may contribute to the calculation of an ATAR.

The School's Responsibilities

Your school develops an assessment program for each course. This means your school is required to:

- Set tasks that will be used to measure your performance in each component of a course.
- Specify the relative value of each of these tasks.
- Inform you in writing of:
 - the components and their weightings for each course
 - when assessment tasks will take place
 - the mark value of each task in relation to the total number of marks for the course
 - the nature of each assessment task (e.g. assignment, test, project, etc.)
 - the administrative details associated with each task (e.g. student absence, late submission of work, etc.)
- Provide adequate notice of the precise timing of each assessment task.
- Keep records of your performance in each task.
- Provide you with information on your progress.

Student Responsibilities

You are expected to complete the tasks that are part of the assessment program, and you should ensure that you have a copy of your school's assessment program for each course. These are included in Section 2 of this schedule.

Submission of Assessment Tasks

- Assessment tasks (excluding live performance/demonstration/practical tasks or in class assessments) **need to be submitted to the teacher/faculty representative by 8.15am on the published due date.** Students will need to sign for their task when submitting a task in non-digital format. Exceptions to the 8.15am submission rule must be sought by the teacher/Head Teacher in consultation with the Deputy Principal.
- An illness Misadventure Application would need to be submitted for consideration by the Deputy Principal in the case of a late submission (i.e. after 8.15am) and must be lodged within 24 hours of the due date/time.
- Students **must be present at school on the school day prior to the published due date**, or a zero mark will be awarded. A medical certificate (or appropriate documentation e.g. funeral, police report) would be required if the student is away from school on the day of or the day prior to an assessment task being due.

Non-Completion of Assessment Tasks

Illness, Accident and/or Misadventure

Assessment tasks will be scheduled to be completed and submitted to teachers for marking on or by specified dates and periods throughout the HSC year. Attendance on the day that the assessment task is either to be performed or submitted, is essential.

- A student may be allowed an extension of time for the work to be completed in extenuating circumstances if the extension is applied for at least 3 days prior to the date due.
- If, however, the student does not hand in any evidence of work by the due date and period, he or she will automatically be awarded zero. This will apply to absences from assessment tests.
- In the event of absence through illness, a Medical Certificate **must** be presented with the misadventure application.
- If a student is aware beforehand that they will not be at school on the day of a scheduled task, prior application must be made for permission to do the task at a different time or to complete an alternative task. The application must be made in writing at least one week prior to the day of the task.

In either of these situations, the student may appeal to the Assessment Appeals Panel within **one** day following the specified due date. ***If an appeal is not lodged under these conditions, then the awarded mark will stand.***

This school's Assessment Appeals Panel will consist of the head teacher of the course concerned, the year advisor and the principal or deputy principal. Appeals must be lodged with the course head teacher using the prescribed school form.

NOTE: *Parents and students are advised that, a holiday scheduled in exam periods in the senior school is unacceptable and is to be avoided at all costs. Please check with school or exam dates located on the school website www.kincumber-h.schools.nsw.gov.au to avoid these periods for holidays. Special application to the Principal will be required in case of emergency as holidays are not considered to be a valid misadventure.*

After considering the reasons for the appeal, the panel will decide whether to:

grant an extension of time for the assessment task without any penalty

or

permit a substitute assessment task to be set

or

confirm the mark, zero or otherwise, which the teacher has already given

or

give an estimate based on other evidence

Misadventure appeals can only be made against procedures and not against the marks awarded.

Technical failures

Technical failures related to computing equipment will not constitute sufficient grounds for the granting of an extension. Students are expected to follow responsible practices in relation to the use of technologies, including the maintenance of reliable backup copies, allowing sufficient time to deal with potential technical failures and the retention of printed drafts.

In the event of printer failure, students may submit work via email attachment to the appropriate teacher through their education portal.

The school's email address is Kincumber-h.school@det.nsw.edu.au

All appeal forms lodged must be kept by the class teacher in the *Students Causing Concern* section of the course monitoring folder along with a copy of the medical certificate or other documentation. **Medical Certificates** are obligatory to cover **absences through illness**. Original copies are to be filed in the student record file.

Failure to complete assessment tasks totalling 50% or more of the final assessment mark will result in the Principal certifying that the course has not been studied satisfactorily. In these circumstances the course will not be included in the result notice, and it may mean that the student will not then be eligible for the award of the HSC.

Non-Serious Attempts and Non-Attempts

Non-serious attempts include frivolous or objectionable material, or where significant sections / areas of a task are left blank or answered minimally (i.e. only a few words).

Students who provide answers to examination questions in a language other than English (unless specifically instructed to do so) will have zero marks awarded.

Non-attempts include those where only multiple-choice questions are attempted.

In the event of a student not making an attempt or a serious attempt at a task, the teacher will:

- award zero for that task
- record a zero mark in the assessment records
- inform the Head Teacher of the non-serious attempt
- inform the parents and keep record of this in the *Students causing concern* section of this folder.

Further action may include:

The formation of a school-based malpractice panel consisting of the teacher, the head teacher and the deputy principal/principal to determine the result for the submitted work.

Malpractice and Assessment Tasks

Students are advised that the rules applying to the conduct of the Higher School Certificate Examinations also apply to the conduct of assessment tasks throughout the course. Students should review the contents of the mandatory **All My Own Work** program, which is accessible on the NSW Education Standards Authority website.

In the event of there being evidence of malpractice associated with the completion of an assessment task (either done at school or out of school without supervision), then a zero assessment may be awarded.

A student is considered to have been **cheating** if they:

- deliberately copy any work that is not their own and submit it for assessment
- lend their work for copying, knowing that whole or part of it will be submitted by another student
- seek/provide assistance from/to another student during test and examinations
- plagiarise material, not acknowledging the source.

'Each student's mark will be determined by the quality of the work produced by the student only. To demonstrate honesty, any component of a student's work that has been written, created or developed by others must be acknowledged in accordance with NESA's subject-specific documentation. Use or inclusion of material from other sources such as books, journals and electronics sources, including the internet, must be acknowledged. General teaching and learning do not require formal acknowledgment.'

(Extract from ACE 9022)

Students, however, may appeal to the Assessment Appeals Panel **within one day following the notification of the zero award**. If an appeal is not lodged under this condition, then the awarded mark will stand.

Such an appeal will be processed according to the procedures set out for appeals under **Illness, Accident and/or Misadventure**.

All malpractices must be reported to the NSW Education Standards Authority. A record is maintained by the NSW Education Standards Authority in relation to any malpractices by students.

Written Material

Candidates are not permitted to take with them into an examination or in-class assessment task any **unauthorised** books, notes, paper or materials. Candidates found to be in possession of any unauthorised material may have their papers in the course cancelled.

General Conduct

Candidates must not behave in any way likely to disturb the work of any other candidate or upset the conduct of any other student, nor borrow material or equipment unless permission has been given by the supervisor.

Normal school rules of conduct apply for examinations and assessment tasks.

Criteria for Teachers Giving Substitute Tasks

Where the result of an assessment task was affected for valid reasons by absence or other misadventure preventing presentation of part or all of the task for assessment, the school may use a mark based on a substitute task or, in exceptional circumstances, an estimate based on other evidence. Students who feel that they have a valid reason should complete an Assessment Misadventure Application form and follow the procedures as set out above. A medical certificate will need to be produced in most cases.

Any substitute task should:

- be based on the same components or outcomes as the original task
- test or measure the same knowledge or skills as the original task
- as far as possible, be of comparable standard to the original task and be assessed in the same manner as the original task.

Usually practical tasks cannot be made up due to the nature of the tasks except in exceptional circumstances.

Some HSC courses have prescribed texts, topics, projects and works that must be considered or studied for the HSC. You should ensure that you are aware of the requirements for your course. Authority publications on prescribed texts, topics, projects and works for all courses in each examination year are available at your school. Ask your year advisor for information or check the current syllabus documents on the Board's website at: <http://www.educationstandards.nsw.edu.au>

School Examination Policies and Processes

Examinations will be conducted following the procedures laid down for the conduct of the HSC examinations. Candidates are subject to the normal rules of the school throughout any examination period. Failure to observe the following rules may result in disqualification from the award of a HSC.

Before the exam

- Familiarise yourself with the location and time of your exam well in advance.
- Obtain sufficient rest the night before each examination. Eat an adequate breakfast.
- Arrive at your exam location at least 10 minutes before the due starting time. No additional time will be granted for students arriving late.
- Make sure you have made your restroom stop before the examination starts.
- Turn off all mobile phones and pagers. (Wrist watches will need to be placed on the desk - HSC ruling). No mobile phones or electronic devices are to be on or with the student during an exam
- No hats, hoods, sunglasses, food or drink are allowed in exams, other than small bottles of water
- Bring the correct equipment. No borrowing is allowed. Bags will be stored as directed by exam supervisors
- Approved calculators may be used. (See NESA website for list). Calculators on mobile phones cannot be used.
- No responsibility will be taken for the safe keeping of any unauthorised material or equipment surrendered to supervisors before or during examinations.
- School uniform is to be worn to all examinations.
- During an examination period, students need only attend their scheduled examinations.

During the exam

- The examination supervisors are in charge of all students.
- You must follow their instructions at all times and behave in a polite and courteous manner.
- Students must sit where directed and remain in their seat until instructed otherwise.
- Students must face the front and not talk or communicate in any way with other students.
- Students may not commence reading or writing until instructed to start the examination.
- Students are not permitted to leave the examination room until the completion of the examination.
- Students may not use the toilets during the first 30 minutes or the last 30 minutes of an examination. Permission must be sought from the supervisor before leaving your seat.
- Students must cease writing when instructed to do so and remain silent until they are outside the examination room.

After the exam

- Students must not remove any examination booklets or papers from the examination room.
- When instructed to do so, leave the examination room quietly and in an orderly manner. Some students may still be working on longer examinations.
- Students must not discuss the examination paper with an absent student.

If you do not follow these basic rules or if you cheat in the examination, you may be removed from the examination room and reported to the principal. The penalty may be the cancellation of that paper, or all papers. This could affect your eligibility to receive the HSC. If you do not make a serious attempt at an examination, or your answers contain frivolous or objectionable material, you may not receive a mark in that course. This could affect your eligibility to receive the HSC.

An award of zero marks will be issued to any student who is absent from an examination. Students must submit a misadventure application supported by a medical certificate or other documentation for special consideration.

Reporting Process

The school will issue reports twice during Year 11. These reports will detail an interim assessment rank for that reporting period. Reports issued post trial, will include an exam mark and rank. Comments will also be included.

Your school submits your assessment marks to the NSW Education Standards Authority calculated from your results on each formal assessment task you undertake as part of your HSC course.

In the case of VET courses studied at school, there is an estimate exam mark. A student log forms a record of student achievement in the units of competency for each course. Your school submits to the Authority a list of the units of competency you have successfully achieved. This information is used to produce your Higher School Certificate or Record of School Achievement.

The school is **not permitted to release final assessment marks** to students. An interim rank is included in the Half-Yearly and Yearly Reports.

Satisfactory Completion of Courses

To receive a result in any course, you must satisfactorily complete that course.

Satisfactory completion of a course involves:

- following the course developed or endorsed by the Authority
- applying yourself with diligence and sustained effort to the set tasks provided in the course by the school
- achieving some or all of the course outcomes.

If your principal decides that you have not satisfactorily completed a course, you will receive an "N Determination" (non-completion) in that course.

Your principal will give you written warnings in sufficient time to allow you to correct any problems regarding your achievement, application or completion of courses. Parents/guardians will also be advised in writing.

You have the right to appeal to the Authority against your principal's decision. If you choose to do so, your principal will explain the appeal mechanism to you.

Section 2

Year 11 Assessment Schedule 2021

On the following pages is a schedule of Year 11 Assessment tasks for each of the courses offered at Kincumber High School. These tasks will be used by teachers to assess each student in a variety of different areas and allow them to determine a valid **assessment mark** and **rank** for each student within each course. It is imperative that **ALL** tasks, for each course are completed by each student to the best of their ability. Further information relating to each assessment task may be obtained from the teacher involved or the Head Teacher responsible for the KLA within which the course is offered. Students should note the following dates for their course examinations.

Year 11 Final Exams - Weeks 9/10, Term 3, 2021 (Sept 6 - 17)

NOTE: Students should not plan leave to coincide with these exam periods. Non-attendance at any exam requires a misadventure application supported by a medical certificate.

Creative & Performing Arts

Creative Arts offers the following courses which are detailed on the following pages.

- Dance
- Music 1
- Visual Arts
- Visual Design

Dance

Dance Year 11 assessment schedule				
Task number	Task 1	Task 2	Task 3	Weighting
Nature of task	CP Dance individual analysis & demonstration, Discussion, Log Book/Seesaw uploads CC demonstration of process, Discussion, Log Book/Seesaw uploads	Research & Essay Scaffolding Task (TEEEL) on both Dance Works	CP Dance, Discussion, Log Book/Seesaw uploads CC Dance, Discussion, Log Book/Seesaw uploads CA Essays – Written TEEEL responses for both works	
Timing	Term 2, Week 4	Term 2, Week 10	Term 3, Week 9/10	
Outcomes assessed	1.1, 1.2, 1.3, 1.4, 2.1, 2.2, 2.3, 2.4, 2.5, 2.6, 3.1, 3.2, 3.3, 3.4, 3.5, 3.6, 3.7	1.1, 1.2, 1.3, 1.4, 4.1, 4.2, 4.3, 4.4, 4.5	1.1, 1.2, 1.3, 1.4, 2.1, 2.2, 2.3, 2.4, 2.5, 2.6, 3.1, 3.2, 3.3, 3.4, 3.5, 3.6, 3.7, 4.1, 4.2, 4.3, 4.4, 4.5	
Core performance	25		15	40
Core composition	15		15	30
Core appreciation		20	10	30
Weighting	40	20	40	Total 100
Formative Assessment	CP	Ongoing discussion, development & alteration of movement to suit individual, Seesaw uploads		
	CC	Ongoing discussion & demonstration of CC, Seesaw uploads demonstrating movement being developed & compositional processes being applied		
	CA	Mind maps of Ochres & Falling Angel, appropriate movement examples from Ochres & Falling Angels		

Music

Music Year 11 assessment schedule				
Task number	Task 1	Task 2	Task 3	Weighting
Nature of task	Class Presentation of Research & Written Submission	Composition Performed and/or submitted notation, recording	Yearly Exam (performance, aural written response)	
Timing	Term 1, Week 10	Term 2, Week 4	Term 3, Weeks 7/8	
Outcomes assessed	2, 4, 5, 6, 8, 10	2, 3, 5, 8, 10, 11	1, 2, 3, 4, 6, 7, 9, 10, 11	
Performance Core			20	20
Composition Core		30		30
Musicology Core	30			30
Aural Core			20	20
Weighting	30	30	40	Total 100

Visual Arts

Visual Arts Year 11 assessment schedule				
Task number	Task 1	Task 2	Task 3	Weighting
Nature of task	Practice Body of Work	Practice Exhibition of Work	Critical & Historical Study Yearly Exam	
Timing	Term 1, Week 10	Term 3, Week 8	Term 3, Weeks 9/10	
Outcomes assessed	1,2,3,4,5,6	1,2,3,4,5,6	7, 8, 9, 10	
Practice BOW	20			20
Exhibition of Work		30		30
Yearly Exam			50	50
Weighting	20	30	50	Total 100

Visual Design

Visual Design Year 11 assessment schedule				
Task number	Task 1	Task 2	Task 3	Weighting
Nature of task	Practical & Research Project	Practical and Research Project	Practical and Research Project	
Timing	Term 1, Week 9	Term 2, Week 9	Term 3, Week 7	
Outcomes assessed	M – 1, 2, 3, 4, 5, 6 CH – 1, 2, 3, 4, 5	M – 1, 2, 3, 4, 5, 6	M – 1, 2, 3, 4, 5, 6 CH – 1, 2, 3, 4, 5	
Making	20	25	25	70
Critical and Historical Studies	15		15	30
Weighting	35	25	40	Total 100

English

English offers the following courses which are detailed on the following pages.

- English - Advanced
- English - Extension 1
- English - Standard
- English - Studies

English - Advanced

English – Advanced Year 11 assessment schedule				
Task number	Task 1	Task 2	Task 3	Weighting
Nature of task	Reading to Write Imaginative Text with Reflection	Narratives that Shape our World Multimodal Presentation	Yearly Examination Critical and Short Answer Response	
Timing	Term 1, Week 10	Term 2, Week 9	Term 3, Weeks 9/10	
Outcomes assessed	EA11-3, EA11-5, EA11-9	EA11-1, EA11-2, EA11-3, EA11-5, EA11-7, EA11-9	EA11-1, EA11-3, EA11-5, EA11-6, EA11-8	
Knowledge and understanding of course content	15	20	15	50
Skills in responding to texts and communication of ideas appropriate to audience, purpose and context across all modes	15	20	15	50
Weighting	30	40	30	Total 100

English – Extension 1

English – Extension 1 Year 11 assessment schedule				
Task number	Task 1	Task 2	Task 3	Weighting
Nature of task	Writing Response	Multimodal Independent Project	Yearly Examination Critical and Creative Response	
Timing	Term 1, Week 10	Term 2, Weeks 8	Term 3, Weeks 9/10	
Outcomes assessed	EE11-2, EE11-3, EE11-6	EE11-1, EE11-2, EE11-3, EE11-4, EE11-5	EE11-1, EE11-2, EE11-3, EE11-4, EE11-5	
Knowledge and understanding of complex texts and of how and why they are valued	15	20	15	50
Skills in complex analysis, sustained composition and independent investigation	15	20	15	50
Weighting	30	40	30	Total 100

English – Standard

English – Standard Year 11 assessment schedule				
Task number	Task 1	Task 2	Task 3	Weighting
Nature of task	Reading to Write Imaginative Text with Reflection	Contemporary Possibilities	Yearly Examination Poetry Study Close Study	
Timing	Term 1, Week 10	Term 2, Week 9	Term 3, Weeks 9/10	
Outcomes assessed	EN11-3, EN11-5, EN11-9	EN11-1, EN11-2, EN11-3, EN11-5, EN11-7, EN11-9	EN11-1, EN11-3, EN11-5, EN11-6, EN11-8	
Knowledge and understanding of course content	15	20	15	50
Skills in responding to texts and communication of ideas appropriate to audience, purpose and context across all modes	15	20	15	50
Weighting	30	40	30	Total 100

English – Studies

English Studies Year 11 assessment schedule				
Task number	Task 1	Task 2	Task 3	Weighting
Nature of task	Mandatory Module Multimodal	Written Response Elective Module:	Collection of Classwork All Modules	
Timing	Term 1, Week 9	Term 2, Week 10	Term 3, Week 8	
Outcomes assessed	ES11-1, ES11-4, ES11-5, ES11-6	ES11-2, ES11-6, ES11-7, ES11-8	ES11-1, ES11-3, ES11-4, ES11-5, ES11-7, ES11-9, ES11-10	
Knowledge and understanding of course content	15	15	20	50
Skills in: <ul style="list-style-type: none"> • Comprehending texts • Communicating ideas • Using language accurately, appropriately and effectively 	15	15	20	50
Weighting	30	30	40	Total 100

Human Society and Its Environment (HSIE)

HSIE offers the following courses which are detailed on the following pages.

- Ancient History
- Business Studies
- Legal Studies
- Modern History
- Society & Culture

Ancient History

Ancient History Year 11 assessment schedule				
Task number	Task 1	Task 2	Task 3	Weighting
Nature of task	Source Analysis	Historical Investigation	Yearly Examination	
Topics	Source analysis	Historical Investigation	Yearly Examination	
Timing	Term 1, Week 10	Term 2, Week 10	Term 3, Weeks 9/10	
Outcomes assessed	AH11-5, AH11-6, AH11-9, AH11-10	AH11-4, AH11-7, AH11-8, AH11-9	AH11-1, AH11-2, AH11-3, AH11-5, AH11-9, AH11-10	
Knowledge and understanding of course content	10	5	25	40
Historical skills in the analysis and evaluation of sources and interpretations	10	5	5	20
Historical inquiry and research	5	15		20
Communication of historical understanding in appropriate forms	5	5	10	20
Weighting	30	30	40	Total 100

Business Studies

Business Studies Year 11 assessment schedule				
Task number	Task 1	Task 2	Task 3	Weighting
Nature of task	Media File/Business Report	Business Plan for SME	Final Examination	
Topics	Nature of Business	Business Planning	Nature of Business Business Managemnt Business Planning	
Timing	Term 2, Week 2	Term 3, Week 5	Term 3, Weeks 9/10	
Outcomes assessed	P2, 7, 8	P4, 8, 9	P1, 3, 5, 6, 10	
Knowledge and Understanding of Course Content		20	20	40
Stimulus Based Skills	10		10	20
Inquiry and Research	10	10		20
Communication of Business Information and Issues in Appropriate Forms	5	5	10	20
Weighting	25	35	40	Total 100

Legal Studies

Legal Studies Year 11 assessment schedule				
Task number	Task 1	Task 2	Task 3	Weighting
Nature of task	Class Test (Multiple-Choice and Short Answers)	Research-based Extended Response	Final Examination	
Topics	The Legal System	Law in Practice	The Legal System, The Individual and the Law, Law in Practice	
Timing	Term 1, Week 7	Term 2, Week 10	Term 3, Weeks 9/10	
Outcomes assessed	P1, P2, P3, P4	P5, P6, P7, P8, P9, P10	P1, P2, P3, P4, P5, P6, P7, P8, P9, P10	
Knowledge and understanding of course content	10	10	20	40
Analysis and Evaluation	5	10	5	20
Inquiry and Research	5	10	5	20
Communication of legal information, ideas and issues in appropriate forms	10	5	5	20
Weighting	30	35	35	Total 100

Modern History

Modern History Year 11 assessment schedule				
Task number	Task 1	Task 2	Task 3	Weighting
Nature of task	Source Analysis (In-class & at home component)	Research Task	Final Examination	
Topics	Investigating Modern History	Historical Investigation	All Content	
Timing	Term 1, Week 8	Term 2, Week 8	Term 3, Weeks 9/10	
Outcomes assessed	MH11-1, MH11-2, MH11-4, MH11-6, MH11-10,	MH11-2, MH11-3, MH11-5, MH11-7, MH11-8, MH11-9	MH11-1, MH11-3, MH11-4, MH11-5, MH11-6, MH11-7, MH11-10	
Knowledge and understanding of content	10	10	20	40
Historical skills in the analysis and evaluation of sources and interpretations	10		10	20
Historical inquiry and research	5	15		20
Communication of historical understanding in appropriate forms	10	5	5	20
Weighting	35	30	35	Total 100

Society & Culture

Society & Culture Year 11 assessment schedule				
Task number	Task 1	Task 2	Task 3	Weighting
Nature of task	Research & Media Analysis Report	Mini PIP Adolescent Research Task	Yearly Examination	
Topics	Social & Cultural World	Personal & Social Identity and Intercultural Communication	All Topics	
Timing	Term 1, Week 9	Term 3, Week 2	Term 3, Weeks 9/10	
Outcomes assessed	1, 7, 8, 9, 10	1, 2, 3, 5, 7, 8, 9, 10	1, 2, 3, 4, 5, 6, 9, 10	
Knowledge understanding of course content	15	15	20	50
Application & evaluation of social & cultural research methodologies	7.5	17.5	5	30
Communication of information, ideas & issues in appropriate forms	7.5	7.5	5	20
Weighting	30	40	30	Total 100

Language

- French Beginners

French Beginners

French Beginners Year 11 assessment schedule				
Task number	Task 1	Task 2	Task 3	Weighting
Nature of task	Q & A with teacher Family Life, Home and Neighbourhood	Response to written text/interview People, Places and Community/Education and Work	Yearly Exam Holidays, Travel and Tourism + All Previous Topics	
Timing	Term 1, Week 10	Term 2, Week 9	Term 3, Weeks 9/10	
Outcomes assessed	1.1, 1.2, 1.3, 1.4, 2.1, 2.2, 2.3, 3.1, 3.2, 3.3	1.1, 1.2, 2.1, 2.2, 2.3, 2.4, 2.5, 2.6	2.1, 2.2, 2.3, 2.4, 3.1, 3.2, 3.3, 3.4	
Listening	20		10	30
Reading		20	10	30
Speaking	10	10		20
Writing			20	20
Weighting	30	30	40	Total 100

Mathematics

Mathematics offers the following courses which are detailed on the following pages.

- Mathematics Advanced
- Mathematics Standard 1
- Mathematics Standard 2
- Mathematics Standard 1 - Mathematics in Trade Pathway
- Mathematics Extension 1

Mathematics Advanced

Mathematics Advanced Year 11 assessment schedule				
Task number	Task 1	Task 2	Task 3	Weighting
Nature of task	Prepared Assessment	Investigation	Examination	
Topics	Prepared Task	Investigation	Yearly Examination	
Timing	Term 1, Week 7	Term 2, Week 9	Term 3, Week 9/10	
Outcomes assessed	MA 11.1 - MA 11.2	MA 11.1 - MA 11.5	MA 11.1 - MA 11.9	
Understanding, fluency and communication	15	15	20	50
Problem solving, reasoning and justification	15	15	20	50
Weighting	30	40	30	Total 100

Assumed Task Knowledge

Task 1: Stage 5 work, Functions and Algebraic Techniques.

Task 2: Stage 5 work, Functions, Trigonometric Functions, Calculus.

Task 3: Stage 5 work, Yearly Examination: Functions, Calculus, Trigonometric Functions, Statistical Analysis, Exponential and Logarithmic Functions.

Mathematics Standard 1 and Standard 2

Mathematics Standard 1 and Standard 2 Year 11 assessment schedule				
Task number	Task 1	Task 2	Task 3	Weighting
Nature of task	Hand in Assessment	In Class Assessment	Examination	
Topics	Investigation	Prepared Task	Yearly Examination	
Timing	Term 2, Week 1	Term 2, Week 9	Term 3, Week 9/10	
Outcomes assessed	MS11-2, MS11-5, MS11-6, MS11-9, MS11-10	MS11-1, MS11-2, MS11-3, MS11-4, MS11-5, MS11-6, MS11-7, MS11-8, MS11-9, MS11-10	MS11-1, MS11-2, MS11-3, MS11-4, MS11-5, MS11-6, MS11-7, MS11-8, MS11-9, MS11-10	
Understanding, fluency and communication	15	20	15	50
Problem Solving, reasoning and justification	15	20	15	50
Weighting	30	40	30	Total 100

Assumed Task Knowledge

Task 1: Stage 5 Work, MS F1.2 Earning and Managing Money

Task 2: Stage 5 Work, MS A1 Formulae and Equations, MS M1.1 Practicalities of Measurement, MS M1.2 Perimeter, Area and Volume, MS F1.2 Earning and Managing Money, MS A2 Linear Relationships, MS F1.1 Finance and Depreciation, MS S1 Data Analysis

Task 3: Stage 5 Work, MS A1 Formulae and Equations, MS M1.1 Practicalities of Measurement, MS M1.2 Perimeter, Area and Volume, MS F1.2 Earning and Managing Money, MS A2 Linear Relationships, MS F1.1 Finance and Depreciation, MS S1 Data Analysis, MS M2 Time, MS M1.3 Units of Energy and Time, MS F1.3 Budgeting and Household Expenses

Mathematics Standard 1 - Mathematics in Trade Pathway

Mathematics Standard 1 - Mathematics in Trade Pathway HSC assessment schedule				
Task number	Task 1	Task 2	Task 3	Weighting
Nature of task	Investigation In Class Assessment	Investigation In Class Assessment	Examination	
Timing	Term 2, Week 1	Term 2, Week 9	Term 3, Week 9/10	
Outcomes assessed	MS11-2, MS11-5, MS11-6, MS11-9, MS11-10	MS11-1, MS11-2, MS11-3, MS11-4, MS11-5, MS11-6, MS11-7, MS11-8, MS11-9, MS11-10	MS11-1, MS11-2, MS11-3, MS11-4, MS11-5, MS11-6, MS11-7, MS11-8, MS11-9, MS11-10	
Understanding, fluency and communication	17 ½	17 ½	15	50
Problem solving, reasoning and justification	17 ½	17 ½	15	50
Weighting	35	35	30	Total 100

Assumed Task Knowledge

- Task 1:** Stage 5 Work, MS A1 Formulae and Equations, MS M1.1 Practicalities of Measurement, MS M1.2 Perimeter, Area and Volume, MS F1.2 Earning and Managing Money, MS A2 Linear Relationships, MS F1.1 Finance and Depreciation, MS S1 Data Analysis, MS M2 Time, MS M1.3 Units of Energy and Time, MS F1.3 Budgeting and Household Expenses
- Task 2:** Stage 5 Work, MS A1 Formulae and Equations, MS M1.1 Practicalities of Measurement, MS M1.2 Perimeter, Area and Volume, MS F1.2 Earning and Managing Money, MS A2 Linear Relationships, MS F1.1 Finance and Depreciation, MS S1 Data Analysis, MS M2 Time, MS M1.3 Units of Energy and Time, MS F1.3 Budgeting and Household Expenses
- Task 3:** Stage 5 Work, MS A1 Formulae and Equations, MS M1.1 Practicalities of Measurement, MS M1.2 Perimeter, Area and Volume, MS F1.2 Earning and Managing Money, MS A2 Linear Relationships, MS F1.1 Finance and Depreciation, MS S1 Data Analysis, MS M2 Time, MS M1.3 Units of Energy and Time, MS F1.3 Budgeting and Household Expenses

Mathematics Extension 1

Mathematics Extension 1 Year 11 assessment schedule				
Task number	Task 1	Task 2	Task 3	Weighting
Nature of task	Investigation	Open Book Task Test	Yearly Examination	
Timing	Term 2, Week 3	Term 3, Week 1	Term 3, Week 9/10	
Outcomes assessed	ME 11.1 – ME 11.7	ME 11.1 – ME 11.7	ME 11.1 – ME 11.7	
Understanding, fluency and communication	15	15	20	50
Problem solving, reasoning and justification	15	15	20	50
Weighting	30	30	40	Total 100

Assumed Task Knowledge

- Task 1: Stage 5 work, Inequalities, Graphical Relationships, Inverse Functions and Parametric Functions.
- Task 2: Stage 5 work, Trigonometry, Polynomials, Binomial Theorem, Permutations and Combinations.
- Task 3: Stage 5 work, Yearly Examination.

NB: Extension 1 candidates are required to sit all assessments relating to the Mathematics (2U) course, in addition to the Extension 1 assessments.

Personal Development, Health & Physical Education

PDHPE offers the following courses which are detailed on the following pages.

- Community & Family Studies
- Personal Development, Health & Physical Education
- Sport, Lifestyle and Recreation

Community & Family Studies

Community & Family Studies Year 11 assessment schedule				
Task number	Task 1	Task 2	Task 3	Weighting
Nature of task	Resource Management Case Study	In-Class Essay	Yearly Exam	
Timing	Term 1, Week 7	Term 2, Week 7	Term 3, Week 9/10	
Outcomes assessed	Core 1 Resource Management 1.1, 1.2, 3.2, 4.1, 4.2, 5.1, 6.1	Core 2 Individuals and Groups 2.1, 2.3, 3.2, 4.1, 4.2, 6.2	Core 1 Core 2 Core 3 1.1, 1.2, 2.1, 2.2, 2.3, 2.4, 3.1, 3.2, 4.1, 4.2, 5.1, 6.1, 6.2	
Knowledge & understanding of course content	10	10	20	40
Skills in Critical thinking, research & analysis and communicating	20	20	20	60
Weighting	30	30	40	Total 100

Personal Development, Health & Physical Education

Personal Development, Health & Physical Education Year 11 assessment schedule				
Task number	Task 1	Task 2	Task 3	Weighting
Nature of task	Health Case Study	Analysis of Body Systems and Movement	Yearly Exam	
Timing	Term 1, Week 9	Term 2, Week 10	Term 3, Week 9/10	
Outcomes assessed	Core 1 P1, P2, P3, P4, P5, P6, P15, P16	Core 2 P7, P8, P9, P10, P11, P17	Core 1, Core 2, Options P1, P2, P3, P4, P5, P6, P7, P8, P9, P10, P11, P12, P13, P14, P15, P16, P17	
Knowledge & understanding of Course Content	10	10	20	40
Skills in critical thinking, Research Analysis and communicating	20	20	20	60
Weighting	30	30	40	Total 100

Sport, Lifestyle & Recreation

Sport, Lifestyle & Recreation Year 11 assessment schedule				
Task number	Task 1	Task 2	Task 3	Weighting
Nature of task	Fitness Testing & Analysis	Practical Application & Aptitude	Resistance Training Application and Analysis	
Topic	Fitness	Garnes & Sports Applications	Resistance Training	
Timing	Term 1, Week 7	Term 2, Week 10	Term 3, Week 8	
Outcomes assessed	1.2, 1.3, 2.2, 3.2, 3.3, 4.1	1.1, 1.3, 2.1, 2.2, 2.3, 2.5, 3.1, 3.2, 3.3, 4.4	1.1, 1.2, 1.3, 2.1, 2.2, 2.3, 2.5, 3.2, 3.3, 4.4	
Weighting	35	35	30	Total 100

Science

Science offers the following courses which are detailed on the following pages.

- Biology
- Chemistry
- Earth & Environmental Science
- Marine Studies
- Physics

Biology

Biology Year 11 assessment schedule				
Task number	Task 1	Task 2	Task 3	Weighting
Nature of task	'Ecosystem Dynamics' Depth Study Field Study	Practical Investigation (Microscopy)	Final Examination	
Timing	Term 1, Week 9	Term 2, Week 9	Term 3, Week 9/10	
Outcomes assessed	BIO11/12-1, BIO11/12-2, BIO11/12-3, BIO11/12-4, BIO11/12-7, BIO11-11	BIO11/12-1, BIO11/12-3, BIO11/12-4, BIO11/12-7, BIO11/12-8	ALL	
Working Scientifically Skills	20	20	20	60
Knowledge and understanding	10	10	20	40
Weighting	30	30	40	Total 100

Chemistry

Chemistry Year 11 assessment schedule				
Task number	Task 1	Task 2	Task 3	Weighting
Nature of task	Practical and Research	Depth study	Final Examination	
Timing	Term 1, Week 8	Term 2, Week 9	Term 3, Week 9/10	
Outcomes assessed	CH11/12-6, CH11/12-4, CH11-8	CH11/12-1, CH11/12-2, CH11/12-5, 11/12-7, CH11-10	ALL	
Working Scientifically Skills	20	20	20	60
Knowledge and Understanding	10	20	10	40
Weighting	30	40	30	Total 100

Earth & Environmental Science

Earth & Environmental Science Year 11 assessment schedule				
Task number	Task 1	Task 2	Task 3	Weighting
Nature of task	Prac Exam	Depth study	Final Examination	
Timing	Term 1, Week 8	Term 2, Week 9	Term 3, Week 9/10	
Outcomes assessed	EES11/12-3, EES11/12-4, EES11/12-5, EES11/12-8	EES11/12-1, EES11/12-2, EES11/12-3, EES11/12-7, EES11/12-11	All Outcomes	
Working Scientifically Skills	20	20	20	60
Knowledge and Understanding	10	20	10	40
Weighting	30	40	30	Total 100

Marine Studies

Marine Studies Year 11 assessment schedule				
Task number	Task 1	Task 2	Task 3	Weighting
Nature of task	Skills First Aid & Water Safety	Depth study	Final Examination	
Timing	Term 1, Week 6	Term 2, Week 9	Term 3, Week 9/10	
Outcomes assessed	2.1, 3.1, 3.2, 3.4	1.1, 2.3, 1.3	1.1,1.2, 1.3, 4.2	
Working Scientifically Skills	20	20	20	60
Knowledge and Understanding	10	10	20	40
Weighting	30	30	40	Total 100

Physics

Physics Year 11 assessment schedule				
Task number	Task 1	Task 2	Task 3	Weighting
Nature of task	Practical	Depth study	Final Examination	
Timing	Term 1, Week 9	Term 2, Week 7	Term 3, Week 9/10	
Outcomes assessed	PH11/12-3, PH11/12-5, PH11-8, PH11-9	PH11/12-1, PH11/12-2, PH11/12-5, PH11/12-7, PH11-10	ALL	
Working Scientifically Skills	20	20	20	60
Knowledge and Understanding of Fundamental Mechanics	10	20	10	40
Knowledge and Understanding of Energy				
Weighting	30	40	30	Total 100

Technology & Applied Studies (TAS)

TAS offers the following courses which are detailed on the following pages.

- Engineering Studies
- Food Technology
- Industrial Technology - Graphics
- Industrial Technology – Timber Products & Furniture Technologies
- Information, Processing & Technology
- Textiles & Design

Engineering Studies

Engineering Studies Year 11 assessment schedule				
Task number	Task 1	Task 2	Task 3	Weighting
Nature of task	Engineered Product Analysis	Engineered Report	Yearly Examination	
Timing	Term 1, Week 10	Term 2, Weeks 8	Term 3, Week 9/10	
Outcomes assessed	P1.1, P1.2, P3.1, P4.1, P4.2, P5.1, P5.2	P1.1, P2.2, P3.1, P5.1, P5.2, P6.1, P6.2	P1.2, P2.1, P2.2, P3.1, P3.3, P4.1, P4.2, P4.3, P6.1	
Knowledge and understanding of course content	10	10	40	60
Knowledge and skills in research, problem solving and communication related to engineering practice	20	20		40
Weighting	30	30	40	Total 100

Food Technology

Food Technology Year 11 assessment schedule				
Task number	Task 1	Task 2	Task 3	Weighting
Nature of task	Food Availability & Selection – Research Survey/Practical	Nutrition – Research Practical	Yearly Examination	
Timing	Term 2, Week 2	Term 3, Weeks 6	Term 3, Week 9/10	
Outcomes assessed	P1.1, P1.2, P3.2, P4.1, P4.2	P2.1, P3.1, P3.2, P4.1, P4.3, P5.1	P1.1, P1.2, P2.1, P2.2, P3.1, P4.3, P4.4	
Knowledge and understanding of course content	10		30	40
Knowledge and skills in designing, research, analysing and evaluating	10	20		30
Skills in experimenting with and preparing food by applying theoretical concepts	10	20		30
Weighting	30	40	30	Total 100

Industrial Technology – Graphics

Industrial Technology – Timber Products & Furniture Technologies Year 11 assessment schedule				
Task number	Task 1	Task 2	Task 3	Weighting
Nature of task	Research Task	Project and Evaluation	Yearly Examination	
Timing	Term 1, Week 10	Term 3, Weeks 7	Term 3, Week 9/10	
Outcomes assessed	P2.1, P3.2, P4.2, P5.1	P2.1, P3.1, P3.2, P3.3, P4.1, P4.2, P4.3	P1.1, P1.2, P2.1, P6.1, P6.2, P7.1, P7.2	
Knowledge and understanding of course content	10	10	20	40
Knowledge and skills in the management, communication and production of project	10	30	20	60
Weighting	20	40	40	Total 100

Industrial Technology – Timber Products & Furniture Technologies

Industrial Technology – Timber Products & Furniture Technologies Year 11 assessment schedule				
Task number	Task 1	Task 2	Task 3	Weighting
Nature of task	Research Task	Project and Evaluation	Yearly Examination	
Timing	Term 1, Week 10	Term 3, Weeks 7	Term 3, Week 9/10	
Outcomes assessed	P2.1, P3.2, P4.2, P5.1	P2.1, P3.1, P3.2, P3.3, P4.1, P4.2, P4.3	P1.1, P1.2, P2.1, P6.1, P6.2, P7.1, P7.2	
Knowledge and understanding of course content	10	10	20	40
Knowledge and skills in the management, communication and production of project	10	30	20	60
Weighting	20	40	40	Total 100

Information, Processing & Technology

Information, Processing & Technology Year 11 assessment schedule				
Task number	Task 1	Task 2	Task 3	Weighting
Nature of task	Research Task	Preliminary Project	Yearly Examination	
Timing	Term 1, Week 10	Term 2, Weeks 9	Term 3, Week 9/10	
Outcomes assessed	P1.1, P1.2, P2.1, P2.2, P3.1, P4.1	P2.1, P5.1, P6.1, P6.2, P7.1, P7.2	P1.1, P1.2, P2.1, P2.2, P4.1, P7.1	
Knowledge and understanding of course content	10	30	20	60
Knowledge and skills in design and development of information systems	20	10	10	40
Weighting	30	40	30	Total 100

Textiles & Design

Textiles & Design Year 11 assessment schedule				
Task number	Task 1	Task 2	Task 3	Weighting
Nature of task	Design Project & Portfolio	Textiles Project & Portfolio	Yearly Examination	
Timing	Term 2, Week 2	Term 3, Weeks 7	Term 3, Week 9/10	
Outcomes assessed	P1.1, P1.2, P2.1, P2.2, P2.3, P4.1	P2.1, P2.2, P2.3, P3.1, P3.2, P4.1	P1.1, P1.2, P3.1, P3.2, P5.1, P5.2, P6.1	
Knowledge and understanding of course content	10	10	30	50
Skills & Knowledge in the design, manufacture & Management of textiles projects	20	30		50
Weighting	30	40	30	Total 100

SVET

SVET offers the following courses which are detailed on the following pages.

- Business Services
- Hospitality – Food and Beverage Stream
- Construction

Business Services



Macquarie Park RTO 90222

School Name: Kincumber High School

Student Assessment Schedule

COURSE: Preliminary Business Services

2021

Assessment Tasks for Certificate II in Business BSB20115		Cluster A	Cluster B
		Prepared for work	Working effectively
		Week: 1 Term: Term 2	Week: 6 Term: 3
Code	Unit of Competency		
BSBWHS201	Contribute to health and safety of self and others	X	
BSBWOR204	Use business technology	X	
BSBITU211	Produce digital text documents		X
BSBITU212	Create and use spreadsheets		X
BSBINM201	Process and maintain workplace information		X

Yearly Exam
Week: 9 & 10 Term: 3
HSC Examinable Units of Competency

Depending on the achievement of units of competency, the possible qualification outcome is Certificate II in Business BSB20115 or a Statement of Attainment towards Certificate II in Business BSB20115.

Schools may schedule exam items in preparation for the HSC exam. These do not form part of the RTO assessment requirements.

The assessment components in this course are competency based. Students need to demonstrate that they have gained and can apply the specific knowledge and skills each unit of competency. Competency assessment is graded as "not yet competent" or "competent". In some cases other descriptive words may be used leading up to "competent". A course mark is not allocated.

Construction



Macquarie Park RTO 90222

School Name: Kincumber High School

Student Competency Assessment Schedule

Course: Preliminary Construction

2021

Assessment Tasks for Certificate II Construction Pathways CPC20211		Cluster A	Cluster B	Cluster C
		Safety	Organise to Communicate	Reading Plans and Calculating
Assessment due		Week: 9 Term: 1	Week: 7 Term: 2	Week: 5 Term: 3
Code	Unit of Competency			
CPCCWHS1001	Prepare to work safely in the construction industry	X		
CPCCOHS2001A	Apply OHS requirements, policies, and procedures in the construction industry	X		
CPCCCA2002B	Use carpentry tools and equipment	X		X
CPCCCM1012A	Work effectively and sustainably in the construction industry	X		
CPCCCM1013A	Plan and organise work		X	
CPCCCM1014A	Conduct workplace communication		X	
CPCCCM2006B	Apply basic levelling procedures			X
CPCCCO2013A	Carry out concreting to simple forms			X

Yearly Examination
 Week: 9/10
 Term: 3
 HSC Examinable Units of Competency

Depending on the achievement of units of competency, the possible qualification outcome is Certificate II Construction Pathways CPC20211 or a Statement of Attainment towards Certificate II Construction Pathways CPC20211.

Schools may schedule examinations in preparation for the HSC exam. These do not form part of the RTO assessment requirements.

The assessment components in this course are competency based. This means that students need to demonstrate that they have gained and can apply the specific knowledge and skills of each unit of competency. Competency assessment is graded as "not yet competent" or "competent". In some cases other descriptive words may be used leading up to "competent". A course mark is not allocated.

Hospitality – Food & Beverage



Macquarie Park RTO 90222

School Name: Kincumber High School

Student Competency Assessment Schedule

Course: Preliminary Hospitality- Food and Beverage Stream

2021

Assessment Tasks for Certificate II Hospitality SIT20316 Assessment Due:		Cluster A	Cluster B	Cluster C
		Getting ready for work	Practical Café Skills	Working relationships
		Week: 9 Term: 1	Week: 8 Term: 2	Week: 6 Term: 3
Code	Unit of Competency			
SITXFSA001	Use hygienic practices for food safety	X		
SITXWHS001	Participate in safe work practices	X		
SITHFAB005	Prepare and serve espresso coffee		X	
SITHCCC003	Prepare and present sandwiches		X	
SITHFAB004	Prepare and serve non-alcoholic beverages		X	
BSBWOR203	Work effectively with others			X
SITXCOM002	Show social and cultural sensitivity			X

Yearly Examination

Week: 9/10
Term: 3

HSC Examinable Units of Competency

Depending on the achievement of units of competency, the possible qualification outcome is a Certificate II in Hospitality SIT20316 or a Statement of Attainment towards Certificate II in Hospitality SIT20316.

Schools may schedule examinations in preparation for the HSC exam. These do not form part of the RTO assessment requirements.

The assessment components in this course are competency based. This means that students need to demonstrate that they have gained and can apply the specific knowledge and skills of each unit of competency. Competency assessment is graded as "not yet competent" or "competent". In some cases other descriptive words may be used leading up to "competent". A course mark is not allocated.

BLANK PAGE



Kincumber High School

Assessment Misadventure Application Form

Today's Date: _____

Task Due Date: _____

Student Name: _____

Year group: _____

Course: _____

Teacher: _____

Task concerned: _____

Did you complete this task: Yes / No (please circle)

What is the nature of your misadventure / issue? (please tick)

☐ Illness

☐ Other

Details : _____

Documentation provided: Yes / No

(examples include medical certificate; funeral notice; police report; statutory declaration; letter)

Student Signature: _____ Parent Signature: _____

Outcome – to be completed by Deputy Principal in consultation with relevant Head Teacher.

Head teacher Recommendation: _____

Head Teacher Signature: _____ Date: _____

DP Decision:

New date /

time: _____

Sit task at alternative time	Estimate	Alternative task	Application Rejected (zero mark awarded)
------------------------------	----------	------------------	--

Deputy Principal Signature: _____ Date: _____

Communicated to: ☐ Teacher ☐ Head Teacher

Copies of this completed document (incl. attachments) go to: DP, Head Teacher, Teacher

BLANK PAGE

Year 11 Assessment Calendar 2021

Term 1 2021	Assessment Task		Term 2 2021	Assessment Task	
Week 1			Week 1	Maths Standard 1 Maths in Trade	Maths Standard 2 Business Services
Week 2			Week 2	Business Studies Food Tech	Textiles
Week 3			Week 3	Maths Ext 1	
Week 4			Week 4	Dance	Music
Week 5			Week 5		
Week 6	Marine Studies		Week 6		
Week 7	Legal Studies Maths Advanced	CAFS SLR	Week 7	CAFS Construction	Physics
Week 8	Modern History EES	Chemistry	Week 8	English Ext 1 Engineering	Modern History Hospitality
Week 9	Society & Culture Biology Construction English Studies	PDHPE Physics Hospitality Visual Design	Week 9	English Advanced Maths Advanced Maths Standard 1 Biology EES IPT French	English Standard Maths in Trade Maths Standard 2 Chemistry Marine Studies Visual Design
Week 10	English Advanced English Standard Engineering IT – Timber Music French	English Ext 1 Ancient History IT – Graphics IPT Visual Arts	Week 10	Ancient History PDHPE SLR Dance	Legal Studies English Studies

Term 3 2021	Assessment Task
Week 1	Maths Ext 1
Week 2	Society & Culture
Week 3	
Week 4	
Week 5	Business Studies Construction
Week 6	Hospitality Business Services Food Tech
Week 7	Textiles Music (W7&8) Visual Design IT – Graphics IT - Timber
Week 8	English Studies SLR Visual Arts
Week 9	YEARLY EXAMINATION
Week 10	YEARLY EXAMINATION

YEAR 11 EXAMINATIONS held in Term 3, Weeks 9/10

CAPA	English	HSIE	MATHS	PDHPE	SCIENCE	TAS
Dance Music (W7&8) Visual Arts	English Advanced English Ext 1 English Standard French	Ancient History Business Studies Legal Studies Modern History Society & Culture Business Services	Maths Advanced Maths Standard 1 Maths Standard 2 Maths in Trade Maths Ext 1	CAFS PDHPE	Biology Chemistry EES Marine Studies Physics	Engineering Food Tech IT-Graphics IT-Timber IPT Textiles Construction Hospitality