



**KINCUMBER
HIGH SCHOOL**



**ASSESSMENT SCHEDULE,
POLICY & PROCEDURES
HSC | YEAR 12 2024**

Table of Contents

Introduction	4
SECTION 1 - Policy	5
General	5
Higher School Certificate Eligibility Requirements	5
Pattern of Study	5
Subjects.....	6
Types of Courses.....	6
The Australian Tertiary Admissions Rank (ATAR) and Tertiary Entry.....	7
Assessment Processes	8
The School's Responsibilities.....	8
Student Responsibilities.....	9
Malpractice and Higher School Certificate Assessment Tasks.....	11
Criteria for Teachers Giving Substitute Tasks.....	12
School Examination Policies and Processes	13
Before the exam.....	13
During the exam.....	13
After the exam.....	14
Reporting Process	14
Satisfactory Completion of Courses	14
'N' Determinations	15
Higher School Certificate Examinations	16
Higher School Certificate Results	16
SECTION 2 – Assessment Schedules	17
HSC Assessment Schedule 2023 – 2024	17
TVET Assessment Schedule	17
Creative & Performing Arts	18
Dance.....	19
Drama.....	20
Music 1.....	21
Visual Arts.....	22
Visual Design.....	23

English.....	24
English - Advanced.....	25
English – Extension 1.....	26
English – Extension 2.....	27
English – Standard.....	28
English Studies.....	29
Human Society and Its Environment (HSIE).....	30
Ancient History.....	31
Business Studies.....	32
Geography.....	33
Legal Studies.....	34
Modern History.....	35
Society & Culture.....	36
Mathematics.....	37
Mathematics Advanced.....	38
Mathematics Standard 1 (may contribute towards an ATAR).....	39
Mathematics Standard 1 – Maths in Trade Pathway.....	40
Mathematics Standard 2.....	41
Mathematics Extension 1.....	42
Mathematics Extension 2.....	43
Personal Development, Health & Physical Education.....	44
Community & Family Studies.....	45
Personal Development, Health & Physical Education.....	46
Sport, Lifestyle & Recreation.....	47
Science.....	48
Agriculture.....	49
Biology.....	50
Chemistry.....	51
Earth and Environmental Science.....	52
Physics.....	53
Technology & Applied Studies (TAS).....	54
Engineering.....	55
Industrial Technology – (Graphic & Timber Products and Furniture Technologies).....	56
SVET.....	57
Construction.....	58
Hospitality – Food and Beverage.....	59
Year 12 Assessment calendar 2023/2024.....	61

Introduction

A word from the Principal

To Year 12 students

The next 12 months will be one of the busiest, most challenging and satisfying in your life to date. As you embark on your HSC studies you will be expected to accept full responsibility for your personal organisation and the submission of all tasks. It is important that you complete all class work and homework tasks, in addition to the compulsory assessment tasks listed in this booklet.

This booklet is of great importance to you throughout your HSC year so, please keep it in a safe place. You will need to refer to it frequently. It is part of your responsibility to familiarise yourself with the requirements for each course and to construct a timetable for yourself which allows you time to attend school, study, complete assessment tasks and examinations; as well as maintain part-time employment, play sport and socialise – not an easy task!

As well as the assessment requirements this booklet also sets out the requirements and procedures to be followed for the successful completion of the HSC. For instance, there are very strict procedures to be followed if you miss a task or examination. Please refer to this booklet for these procedures and look in the appendix at the back for the forms you will need to copy and submit.

There will be a lot of people ready and willing to give you advice, help and guidance. Make sure you consult with your teachers/mentors and Year Advisors and actively seek out this help. Always seek assistance early, before the problem becomes too big for you to handle. Do not leave tasks until the last moment. Rushed work will usually be of inferior quality and earn poor marks. When in doubt, ASK!

Finally, a mature and planned approach to this coming year will bring you the rewards you deserve. The time will fly past quickly so get started. Good luck.

Brent Walker
Principal

SECTION 1 - Policy

General

This book contains an outline of the Kincumber High School HSC Assessment Policy and the assessment procedures for each of the courses offered at Kincumber High School, for the 2022 - 2023 HSC cohort. The school assessment policy emphasises the importance of meeting assessment requirements, especially deadlines for submission or completion of work, and the consequences of failing to do so. The procedures for each course will specify the nature of assessment tasks, and the approximate dates on which they will be due.

Higher School Certificate Eligibility Requirements

To be eligible for the award of the Higher School Certificate, you must have:

- a) gained the Record of School Achievement or other qualifications the NSW Standards Authority (NESA) considers satisfactory
- b) attended a government school, an accredited non-government school, a school outside NSW recognised by NESA, or a TAFE college
- c) completed *HSC: All My Own Work* or its equivalent (NOTE: students undertaking only Stage 6 Life Skills courses are not required to complete the *HSC: All My Own Work* program or its equivalent.)
- d) satisfactorily completed courses that comprise the pattern of study required by NESA for the award of the Higher School Certificate
- e) sat for and make a serious attempt at the requisite HSC examinations.

Pattern of Study

To qualify for the Higher School Certificate, you must satisfactorily complete a Preliminary pattern of study comprising at least 12 units and an HSC pattern of study comprising at least 10 units. Both patterns must include:

- at least 6 units of Board Developed Courses
- at least 2 units of a Board Developed Course in English*
- at least three courses of 2-unit value or greater (either Board Developed or Board Endorsed Courses)
- at least four subjects.

* Satisfactory completion of English Studies fulfils English requirements for the HSC. The course will count towards the 6 units of Board Developed courses required for the award of the HSC.

* There are optional HSC examinations in both English Studies and Mathematics Standard 1 that can contribute towards an ATAR

In addition, a maximum of 6 units of courses in Science can contribute to your HSC.

The Higher School Certificate Curriculum

Subjects

A subject is the general name given to an area of study and a subject may offer one or more courses. There are a wide variety of subjects to choose from for the HSC, with over 150 Board Developed Courses and a large range of Board Endorsed Courses.

English, Mathematics, History, VET frameworks and some Languages are subjects, which offer more than one course. The other subjects each offer one 2 unit course.

Types of Courses

Board Developed Courses

Board Developed Courses are the courses for which the NSW Education Standards Authority develops a syllabus, setting out the objectives, outcomes, structure and content. The Authority also develops HSC examinations for most of these courses.

In addition, the Board develops course and assessment requirements, specimen examination papers, marking guidelines and performance scales for these courses for distribution to all schools.

Most Board Developed Courses contribute to the calculation of the Australian Tertiary Admissions Rank (ATAR)

Board Endorsed Courses

There are two types of Board Endorsed Courses:

- School-designed Courses – these are courses developed by individual schools in response to local interest or need and endorsed by the Board.
- Content Endorsed Courses (CECs) – these fall into two categories: general CECs and VET CECs including many delivered by TAFE.

All Board Endorsed Courses count towards the HSC and are listed on your Record of Achievement. However, Board Endorsed Courses do not count towards calculation of the Australian Tertiary Admissions Rank (ATAR)

VET HSC Courses

Students who satisfactorily complete VET HSC courses (including TAFE delivered VET Courses) will also receive an additional VET credential, which may be an AQF Certificate or a Statement of Attainment.

The Australian Tertiary Admissions Rank (ATAR) and Tertiary Entry

The requirements for the Australian Tertiary Admissions Rank (ATAR) are determined by the universities. The ATAR is calculated by the Universities' Technical Committee by scaling on behalf of universities in NSW and the ACT. A candidate's ATAR is calculated from the scaled aggregate of the marks in the best ten units in Board Developed HSC courses, subject to the following restrictions:

- At least two units of English must be included.
- At least three Board Developed courses of two units value or greater must be included.
- Courses from at least four subjects must be included.

(Note: Students wishing to have an ATAR calculated must indicate this on their HSC entry form. Students who do not meet the above requirements will not be eligible for an ATAR).

At most, two units of category B courses may be included in the calculation of the ATAR

The universities categorise Board Developed Courses as either Category A or Category B. To have an ATAR based on an aggregate of scaled marks in 10 units, students must have completed at least eight Board Developed Category A units.

The ATAR may include units accumulated by a candidate over a total time span of five years.

If a candidate repeats a unit, only the latest attempt will be available for inclusion in the ATAR.

The Category B courses are:

The following school delivered courses:

Information Technology (VET), Hospitality Operations (VET), Retail Operations (VET), Construction (VET), Business Services (VET), Primary Industries (VET)

and the following TAFE delivered courses:

Accounting, Business Services – office administration (VET), Construction (VET), Information Technology Support (VET), Metal & Engineering (VET), Primary Industries, Hospitality Operations (VET) and Tourism (VET)

If students want results from VET courses to be included in the calculation of their ATAR, they must undertake the optional written examination offered for the HSC. Students at Kincumber High School must inform their VET teachers of their intention to sit this examination at the beginning of their HSC year (Term 4 of Year 11)

Assessment Processes

You are required to complete school-based assessment tasks for most of the Board Developed HSC Courses you study.

School-based assessment counts for 50% of your overall mark in each course and is reported on your Higher School Certificate Record of Achievement.

School-based assessment tasks are designed to measure performance in a wider range of objectives than may be tested in an examination. Assessment tasks may include tests, written or oral assignments, practical activities, fieldwork and projects. The assessment requirements for each Board Developed Course are set out in each syllabus.

For VET courses, you are assessed on your competency in performing work related tasks. This counts towards your VET qualification but not towards a HSC mark. Students sitting the final HSC examination in a Category B VET course will be awarded a HSC mark which may contribute to the calculation of an ATAR.

The School's Responsibilities

Your school develops an assessment program for each course. This means your school is required to:

- Set tasks that will be used to measure your performance in each component of a course.
- Specify the relative value of each of these tasks.
- Inform you in writing of:
 - the components and their weightings for each course
 - when assessment tasks will take place
 - the mark value of each task in relation to the total number of marks for the course
 - the nature of each assessment task (e.g. assignment, test, project, etc.)
 - the administrative details associated with each task (e.g. student absence, late submission of work, etc.)
- Provide adequate notice of the precise timing of each assessment task.
- Keep records of your performance in each task.
- Provide you with information on your progress.

Student Responsibilities

You are expected to complete the tasks that are part of the assessment program, and you should ensure that you have a copy of your school's assessment program for each course. These are included in Section 2 of this schedule.

Submission of Assessment Tasks

- Assessment tasks (excluding live performance/demonstration/practical tasks or in class assessments) need to be submitted to the teacher/faculty representative by 8.15am on the published due date. Students will need to sign for their task when submitting a task in non-digital format. Exceptions to the 8.15am submission rule must be sought by the teacher/Head Teacher in consultation with the Deputy Principal.
- An Illness Misadventure Application would need to be submitted for consideration by the Deputy Principal in the case of a late submission (i.e. after 8.15am) and must be lodged within 24 hours of the due date/time.
- Students must be present at school on the school day prior to the published due date, or a zero mark will be awarded. A medical certificate (or appropriate documentation e.g. funeral, police report) would be required if the student is away from school on the day of or the day prior to an assessment task being due.

Non-Completion of Assessment Tasks

Illness, Accident and/or Misadventure

Assessment tasks will be scheduled to be completed and submitted to teachers for marking on or by specified dates and periods throughout the HSC year. Attendance on the day that the assessment task is either to be performed or submitted, is essential.

- A student may be allowed an extension of time for the work to be completed in extenuating circumstances if the extension is applied for at least 3 days prior to the date due.
- If, however, the student does not hand in any evidence of work by the due date and period, he or she will automatically be awarded zero. This will apply to absences from assessment tests.
- In the event of absence through illness, a Medical Certificate must be presented with the misadventure application.
- If a student is aware beforehand that they will not be at school on the day of a scheduled task, prior application must be made for permission to do the task at a different time or to complete an alternative task. The application must be made in writing at least one week prior to the day of the task.

In either of these situations, the student may appeal to the Assessment Appeals Panel within *one* day following the specified due date. *If an appeal is not lodged under these conditions, then the awarded mark will stand.*

This school's Assessment Appeals Panel will consist of the head teacher of the course concerned, the year advisor and the principal or deputy principal. Appeals must be lodged with the course head teacher using the prescribed school form.

NOTE:

Parents and students are advised that, a holiday scheduled in exam periods in the senior school is unacceptable and is to be avoided at all costs. Please check with school or exam dates located on the school website www.kincumber-h.schools.nsw.gov.au to avoid these periods for holidays. Special application to the Principal will be required in case of emergency as holidays are not considered to be a valid misadventure.

After considering the reasons for the appeal, the panel will decide whether to:

grant an extension of time for the assessment task without any penalty

or

permit a substitute assessment task to be set

or
confirm the mark, zero or otherwise, which the teacher has already given
or
 give an estimate based on other evidence

Misadventure appeals can only be made against procedures and not against the marks awarded.

Technical failures

Technical failures related to computing equipment will not constitute sufficient grounds for the granting of an extension. Students are expected to follow responsible practices in relation to the use of technologies, including the maintenance of reliable backup copies, allowing sufficient time to deal with potential technical failures and the retention of printed drafts.

In the event of printer failure, students may submit work via email attachment to the appropriate teacher through their education portal.

The school's email address is Kincumber-h.school@det.nsw.edu.au

All appeal forms lodged must be kept by the class teacher in the *Students Causing Concern* section of the course monitoring folder along with a copy of the medical certificate or other documentation. *Medical Certificates* are obligatory to cover *absences through illness*. Original copies are to be filed in the student record file.

Failure to complete assessment tasks totalling 50% or more of the final assessment mark will result in the Principal certifying that the course has not been studied satisfactorily. In these circumstances the course will not be included in the result notice, and it may mean that the student will not then be eligible for the award of the HSC.

Non-Serious Attempts and Non-Attempts

Non-serious attempts include frivolous or objectionable material, or where significant sections / areas of a task are left blank or answered minimally (i.e. only a few words).

Students who provide answers to examination questions in a language other than English (unless specifically instructed to do so) will have zero marks awarded.

Non-attempts include those where only multiple-choice questions are attempted.

In the event of a student not making an attempt or a serious attempt at a task, the teacher will:

- award zero for that task
- record a zero mark in the assessment records
- inform the Head Teacher of the non-serious attempt
- inform the parents and keep record of this in the *Students causing concern* section of this folder.

Further action may include:

The formation of a school-based malpractice panel consisting of the teacher, the head teacher and the deputy principal/principal to determine the result for the submitted work.

Malpractice and Higher School Certificate Assessment Tasks

Students are advised that the rules applying to the conduct of the Higher School Certificate Examinations also apply to the conduct of assessment tasks throughout the course. Students should review the contents of the mandatory All My Own Work program, which is accessible on the NSW Education Standards Authority website.

In the event of there being evidence of malpractice associated with the completion of an assessment task (either done at school or out of school without supervision), then a zero assessment may be awarded.

A student is considered to have been cheating if they:

- deliberately copy any work that is not their own and submit it for assessment
- lend their work for copying, knowing that whole or part of it will be submitted by another student
- seek/provide assistance from/to another student during test and examinations
- plagiarise material, not acknowledging the source.

'Each student's mark will be determined by the quality of the work produced by the student only. To demonstrate honesty, any component of a student's work that has been written, created or developed by others must be acknowledged in accordance with NESA's subject-specific documentation. Use or inclusion of material from other sources such as books, journals and electronics sources, including the internet, must be acknowledged. General teaching and learning do not require formal acknowledgment.'

(Extract from ACE 9022)

Students, however, may appeal to the Assessment Appeals Panel within one day following the notification of the zero award. If an appeal is not lodged under this condition, then the awarded mark will stand.

Such an appeal will be processed according to the procedures set out for appeals under Illness, Accident and/or Misadventure.

All malpractices must be reported to the NSW Education Standards Authority. A record is maintained by the NSW Education Standards Authority in relation to any malpractices by students.

Written Material

Candidates are not permitted to take with them into an examination or in-class assessment task any *unauthorised* books, notes, paper or materials. Candidates found to be in possession of any unauthorised material may have their papers in the course cancelled.

General Conduct

Candidates must not behave in any way likely to disturb the work of any other candidate or upset the conduct of any other student, nor borrow material or equipment unless permission has been given by the supervisor.

Normal school rules of conduct apply for examinations and assessment tasks.

Criteria for Teachers Giving Substitute Tasks

Where the result of an assessment task was affected for valid reasons by absence or other misadventure preventing presentation of part or all of the task for assessment, the school may use a mark based on a substitute task or, in exceptional circumstances, an estimate based on other evidence. Students who feel that they have a valid reason should complete an Assessment Misadventure Application form and follow the procedures as set out above. A medical certificate will need to be produced in most cases.

Any substitute task should:

- be based on the same components or outcomes as the original task
- test or measure the same knowledge or skills as the original task
- as far as possible, be of comparable standard to the original task and be assessed in the same manner as the original task.

Usually practical tasks cannot be made up due to the nature of the tasks except in exceptional circumstances.

Some HSC courses have prescribed texts, topics, projects and works that must be considered or studied for the HSC. You should ensure that you are aware of the requirements for your course. Authority publications on prescribed texts, topics, projects and works for all courses in each examination year are available at your school. Ask your year advisor for information or check the current syllabus documents on the Board's website at: <http://www.educationstandards.nsw.edu.au>

School Examination Policies and Processes

Examinations will be conducted following the procedures laid down for the conduct of the HSC examinations. Candidates are subject to the normal rules of the school throughout any examination period. Failure to observe the following rules may result in disqualification from the award of a HSC.

Before the exam

- Familiarise yourself with the location and time of your exam well in advance.
- Obtain sufficient rest the night before each examination. Eat an adequate breakfast.
- Arrive at your exam location at least 10 minutes before the due starting time. No additional time will be granted for students arriving late.
- Make sure you have made your restroom stop before the examination starts.
- Turn off all mobile phones and pagers. (Wrist watches will need to be placed on the desk - HSC ruling). No mobile phones or electronic devices are to be on or with the student during an exam
- No hats, hoods, sunglasses, food or drink are allowed in exams, other than small bottles of water
- Bring the correct equipment. No borrowing is allowed. Bags will be stored as directed by exam supervisors
- Approved calculators may be used. (See NESA website for list). Calculators on mobile phones cannot be used.
- No responsibility will be taken for the safe keeping of any unauthorised material or equipment surrendered to supervisors before or during examinations.
- School uniform is to be worn to all examinations.
- During an examination period, students need only attend their scheduled examinations.

During the exam

- The examination supervisors are in charge of all students.
- You must follow their instructions at all times and behave in a polite and courteous manner.
- Students must sit where directed and remain in their seat until instructed otherwise.
- Students must face the front and not talk or communicate in any way with other students.
- Students may not commence reading or writing until instructed to start the examination.
- Students are not permitted to leave the examination room until the completion of the examination.
- Students may not use the toilets during the first 30 minutes or the last 30 minutes of an examination. Permission must be sought from the supervisor before leaving your seat.
- Students must cease writing when instructed to do so and remain silent until they are outside the examination room.

After the exam

- Students must not remove any examination booklets or papers from the examination room.

- When instructed to do so, leave the examination room quietly and in an orderly manner. Some students may still be working on longer examinations.
- Students must not discuss the examination paper with an absent student.

If you do not follow these basic rules or if you cheat in the examination, you may be removed from the examination room and reported to the principal. The penalty may be the cancellation of that paper, or all papers. This could affect your eligibility to receive the HSC. If you do not make a serious attempt at an examination, or your answers contain frivolous or objectionable material, you may not receive a mark in that course. This could affect your eligibility to receive the HSC.

An award of zero marks will be issued to any student who is absent from an examination. Students must submit a misadventure application supported by a medical certificate or other documentation for special consideration.

Reporting Process

The school will issue reports twice during the HSC year. These reports will detail an interim assessment rank for that reporting period. Reports issued post trial, will include an exam mark and rank. Comments will also be included.

Your school submits your assessment marks to the NSW Education Standards Authority calculated from your results on each formal assessment task you undertake as part of your HSC course.

In the case of VET courses studied at school, there is an estimate exam mark. A student log forms a record of student achievement in the units of competency for each course. Your school submits to the Authority a list of the units of competency you have successfully achieved. This information is used to produce your Higher School Certificate or Record of School Achievement.

The school is *not permitted to release final assessment marks* to students. An interim rank is included in the Half-Yearly and Yearly Reports.

Satisfactory Completion of Courses

To receive a result in any course, you must satisfactorily complete that course.

Satisfactory completion of a course involves:

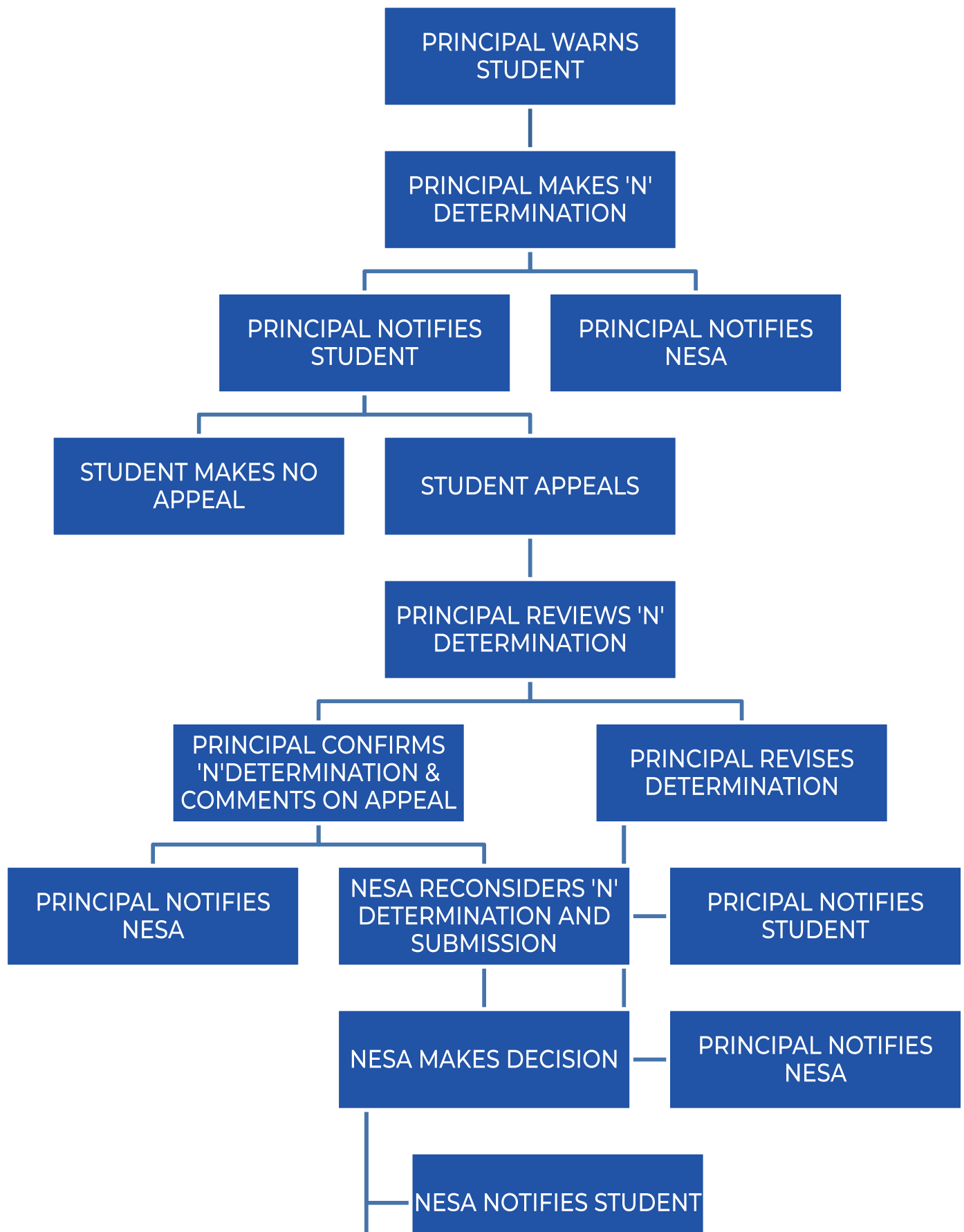
- following the course developed or endorsed by the Authority
- applying yourself with diligence and sustained effort to the set tasks provided in the course by the school
- achieving some or all of the course outcomes.

If your principal decides that you have not satisfactorily completed a course, you will receive an "N Determination" (non-completion) in that course.

Your principal will give you written warnings in sufficient time to allow you to correct any problems regarding your achievement, application or completion of courses. Parents/guardians will also be advised in writing.

You have the right to appeal to the Authority against your principal's decision. If you choose to do so, your principal will explain the appeal mechanism to you.

'N' Determinations



Higher School Certificate Examinations

Most examinations for the Higher School Certificate are written examinations that are held in October and November. You may be required to take practical examinations in languages, performance examinations in Dance, Drama and Music, or prepare projects and practical works to be submitted for examination.

Practical examinations for some courses are held in Term 3 of the HSC year. These are held separately from the written examinations. They may also be held at a different venue from that used for the written examinations. Works submitted for marking in some courses will also be required to be completed in Term 3.

The proportion of marks given to written examinations, practical examinations, practical works and assessments is set out in the Examination Specifications for courses, as listed in the syllabuses.

Examination papers are marked by carefully chosen expert markers. Closely supervised procedures are maintained to ensure accuracy and security.

If, at examination time, you become ill or suffer an accident that affects your examination performance, you should submit an illness/misadventure appeal form through the principal, provided that you can present evidence to support your appeal, for example, a medical certificate. In the case of most Board courses, if your appeal is upheld you will receive your scaled examination mark or your moderated assessment mark for the examination, whichever is the greater.

Higher School Certificate Results

If you meet all the requirements, you will be awarded an HSC. The certificate shows your name and school.

The NSW Education Standards Authority issues the HSC Record of Achievement to students who have satisfactorily completed any Preliminary or HSC courses. Students accumulating their courses will receive a Record of Achievement for each calendar year of study.

Results of HSC courses satisfactorily completed appear on the HSC Record of Achievement and on a Course Report. Results of Board Developed Courses are recorded under the following headings on the Record of Achievement:

- The Assessment Mark is the moderated mark awarded for your assessment tasks at school.
- The Examination Mark is the mark awarded for the external examination.
- The HSC Mark is the average of the Examination and Assessment marks.
- The performance band shows your level of achievement in that course.

This information will also be contained in a Course Report, which will be issued for each course completed. The Course Report will include descriptors for each Performance Band, which provides a summary of what students know and are able to do.

No assessment mark is shown for VET courses. For 240 hour VET courses an Examination Mark, HSC Mark and Performance Band will only be shown for students who have undertaken the optional HSC examination.

All students with special education needs who meet the pattern of study requirements and satisfactorily complete the required studies, will receive a HSC testamur and a Record of Achievement, listing results in Board Developed Courses (including Life Skills courses) and Board Endorsed Courses. Students will also receive a Student Profile from their school listing the outcomes achieved in each Life Skills course.

SECTION 2 – Assessment Schedules

HSC Assessment Schedule 2023 – 2024

On the following pages is a schedule of HSC assessment tasks for each of the Board Endorsed courses offered at Kincumber High School. These tasks will be used by teachers to assess each student in a variety of different areas and allow them to determine a valid assessment mark and rank for each student within each course. (The final assessment mark will be forwarded on to the NSW Education Standards Authority). It is imperative that all tasks for each course are completed by each student to the best of their ability. Further information relating to each assessment task may be obtained from the teacher involved or the head teacher responsible for the KLA within which the course is offered.

If a student is scheduled to have more than three assessment tasks in one week (not including the HSC Trial Exams), they should seek support from the Deputy Principal to examine possible solutions.

Students should note the following dates for the formal examination period:

Year 12 Trial HSC Exams - Weeks 5/6 of Term 3, 2024
Commencing Monday August 19 and concluding Friday August 30

TVET Assessment Schedule

Students undertaking TVET courses at Gosford, Ourimbah or Wyong Colleges of TAFE will be supplied by the TAFE with individual assessment schedules for the course, they are enrolled. It is the responsibility of students to make sure they follow the guidelines provided by TAFE in each subject, and to liaise with their TAFE teacher and the Careers Advisor at school (Mrs Barber), if a problem occurs.

A high level of attendance at TAFE courses is essential for success, and other commitments such as sport, work, or even school exams will not be considered as excuses for non-attendance.

Creative & Performing Arts

Creative Arts offers the following courses which are detailed on the following pages.

- Dance
- Drama
- Music 1
- Visual Arts
- Visual Design

Dance

Dance HSC Assessment Schedule					
Task number	Task 1	Task 2	Task 3	Task 4	Weighting
Nature of task	Major study	Log book, Rationale, Video, Elaboration, Practical Demonstration of CC	Log Book, Video Portfolio, Discussion & Practical Demonstration of CP Dance. Research Task on Both Prescribed Works	Trial HSC Exam for all Four Components	
Timing	Term 4, Week 7	Term 1, Week 6	Term 2, Week 8	Term 3, Week 1 Term 3, Weeks 5/6	
Outcomes assessed	Will vary depending on the Major Study selected	1.1, 1.2, 1.3, 3.1, 3.2, 3.3	1.1, 1.2, 1.3, 2.1, 2.2, 2.3, 4.1, 4.2, 4.3, 4.4, 4.5	1.1, 1.2, 1.3, 1.4, 2.1, 2.2, 2.3, 3.1, 3.2, 3.3, 4.1, 4.2, 4.3, 4.4, 4.5 & MS outcomes	
Core performance			15	5 Week 1, Term 3	20
Core composition		15		5 Week 1, Term 3	20
Core appreciation			10	10 Trial HSC examination period	20
Major study	30			10 Week 1 Term 3 OR during Trial HSC examination period	40
Weighting	30	15	25	30	Total 100

Drama

Drama HSC Assessment Schedule					
Task number	Task 1	Task 2	Task 3	Task 4	Weighting
Nature of task	Australian Drama Logbook/Performance	Part A Extended Response Studies in Drama & Theatre Part B IP Progress	Group Performance	Part A Trial Individual Project/Group Performance Part B Trial HSC Written Examination	
Timing	Term 4, Week 9	Term 1, Week 9	Term 2, Weeks 9	Part A Term 3 Week 2 Part B Term 3, Weeks 5/6	
Outcomes assessed	H1.1, H1.2, H1.3, H1.4, H1.5, H1.6, H2.1, H2.2, H 2.5, H3.2, H3.3	H1.7, H2.4, H3.2, H3.3, H3.4, H3.5	H1.1, H1.2, H1.3, H1.4, H1.6, H1.9, H2.2, H2.4, H2.5, H3.2, H3.3	H1.1, H1.2, H1.3, H1.4, H1.5, H1.6, H1.7, H1.8, H1.9, H 2.1, H2.2, H2.3, H2.4, H2.5, H3.1, H3.2, H3.3	
Making	10	10	10	10	40
Performance	10		10	10	30
Critically Studying		20		10	30
Weighting	20	30	20	30	Total 100

Music 1

Music 1 HSC Assessment Schedule					
Task number	Task 1	Task 2	Task 3	Task 4	Weighting
Nature of task	Written Analysis Submitted Analysis of Listening Repertoire	Performance Submission Examination Aural Responses - Listening Responses	Performance/Composition	Performance/Musicology/Aural Trial HSC Examination – Elec 1, Elec 2, Elec 3 & Aural Examinations	
Timing	Term 4, Week 10	Term 1, Week 7	Term 3, Weeks 2/3	Term 3, Weeks 5/6	
Outcomes assessed	2, 4, 6, 10	1, 2, 4, 5, 6, 8, 9, 11	1, 2, 3, 4, 7, 8, 9, 10, 11	1, 2, 3, 4, 5, 6, 7, 8, 9, 10, 11	
Performance		15			15
Composition			15		15
Musicology	15				15
Aural		15		10	25
Elective 1				10	10
Elective 2				10	10
Elective 3				10	10
Weighting	15	30	15	40	Total 100

Visual Arts

Visual Arts HSC Assessment Schedule					
Task number	Task 1	Task 2	Task 3	Task 4	Weighting
Nature of task	Visual Arts Diary & Body of Work in progress	Part A Section 1 Part B Section 2 Responses In Class test	Trial HSC Examination	Body of Work VAPD	
Timing	Term 1, Week 2	Term 1, Week 10	Term 3, Weeks 5/6	Term 3, Week 7 (Date set by NESAs)	
Outcomes assessed	1, 2, 3, 4	7, 8, 9, 10	7, 8, 9, 10	1, 2, 3, 4, 5, 6	
Art Making	10			40	50
Art History Art Criticism		20	30		50
Weighting	10	20	30	40	Total 100

Visual Design

Visual Design HSC Assessment Schedule				
Task number	Task 1	Task 2	Task 3	Weighting
Nature of task	Design Module 1 Practical & Written	Design Module 2 Practical & Written	Individual/Collaborative Design Project Module GM	
Timing	Term 1, Week 2	Term 2, Week 2	Term 3, Week 3	
Outcomes assessed	M – 1, 2, 3, 4, 5, 6 CH – 1, 2, 3, 4	M – 1, 2, 3, 4, 5, 6 CH – 1, 2, 3, 4	M – 1, 2, 3, 4, 5, 6	
Making	20	20	30	70
Critical and Historical Studies	15	15		30
Weighting	35	35	30	Total 100

English

English offers the following courses which are detailed on the following pages.

- English - Advanced
- English - Extension 1
- English - Extension 2
- English - Standard
- English - Studies

English - Advanced

English – Advanced HSC Assessment Schedule					
Task number	Task 1	Task 2	Task 3	Task 4	Weighting
Nature of task	Multimodal Response Common Module: Texts and Human Experiences	Extended Response Module B: Critical Study of Literature	Craft of Writing Task Module C: The Craft of Writing	Trial HSC Examination Common Module Module A Module B Module C (5%)	
Timing	Term 4, Week 10	Term 1, Week 8	Term 2, Week 5	Term 3, Weeks 5/6	
Outcomes assessed	EA12-1, EA12-3, EA12-6	EA12-3, EA12-7, EA12-8	EA12-4, EA12-5, EA12-9	All outcomes	
Knowledge and understanding of course content	10	15	10	15	50
Skills in responding to texts and communication of ideas appropriate to audience, purpose and context across all modes	15	10	10	15	50
Weighting	25	25	20	30	Total 100

English – Extension 1

English – Extension 1 HSC Assessment Schedule				
Task number	Task 1	Task 2	Task 3	Weighting
Nature of task	Imaginative Response and Reflection	Critical Response with Related Material	Trial HSC Examination	
Timing	Term 1, Week 3	Term 2, Week 6	Term 3, Weeks 5/6	
Outcomes assessed	EA12-1, EA12-3, EA12-5	EA12-1, EA12-2, EA12-3, EA12-4	EA12-1, EA12-2, EA12-5	
Knowledge and understanding of complex texts and of how and why they are valued	15	20	15	50
Skills in complex analysis, sustained composition and independent investigation	15	20	15	50
Weighting	30	40	30	Total 100

English – Extension 2

English – Extension 2 HSC Assessment Schedule				
Task number	Task 1	Task 2	Task 3	Weighting
Nature of task	Viva Voce	Literature Review	Critique Process	
Timing	Term 4, Week 9	Term 1, Week 10	Term 3, Week 1	
Outcomes assessed	EEX12-1, EEX12-2, EEX12-4	EEX12-1, EEX12-3, EXX12-5	EEX12-1, EXX12-2, EEX12-5	
Skills in extensive Independent research	15	20	15	50
Skills in sustained composition	15	20	15	50
Weighting	30	40	30	Total 100

English – Standard

English – Standard HSC Assessment Schedule

ASSESSMENT SCHEDULE, POLICY & PROCEDURES | HSC | 2024

Task number	Task 1	Task 2	Task 3	Task 4	Weighting
Nature of task	Multimodal Task Texts and Human Experiences	Extended Task Module B: Close Study of Literature	Craft of Writing Task Module C: The Craft of Writing	Trial HSC Examination Common Module Module A Module B Module C (5%)	
Timing	Term 4, Week 10	Term 1, Week 8	Term 2, Week 5	Term 3, Weeks 5/6	
Outcomes assessed	EN12-1, EN12-3, EN12-6	EN12-2, EN12-7, EN12-8	EN12-4, EN12-5, EN12-9	All outcomes	
Knowledge and understanding of course content	10	15	10	15	50
Skills in responding to texts and communication of ideas appropriate to audience, purpose and context across all modes	15	10	10	15	50
Weighting	25	25	20	30	Total 100

English Studies

English Studies HSC Assessment Schedule (may contribute towards an ATAR)					
Task number	Task 1	Task 2	Task 3	Task 4	Weighting
Nature of task	Multimodal Presentation Mandatory Module: Texts & Human Experiences	Discursive Essay Elective module: We Are Australians	In-class Examination - Reading Task Elective Module: Local Heroes	Collection of Classwork All modules	
Timing	Term 4, Week 10	Term 1, Week 8	Term 2, Week 5	Term 3, Week 7	
Outcomes assessed	ES12-1, ES12-2, ES12-3, ES12-4, ES12-5, ES12-6, ES12-7, ES12-8, ES12-9	ES12-2 ES12-3, ES12-4 ES12-5, ES12-6	ES12-1, ES12-2, ES12-5, ES12-8, ES12-9	ES12-1, ES12-2, ES12-3, ES12-4, ES12-5, ES12-6, ES12-7, ES12-8, ES12-9, ES12-10	
Knowledge and understanding of course content	15	10	10	15	50
Skills in: <ul style="list-style-type: none"> comprehending text communicating ideas using language accurately, appropriately and effectively 	10	10	15	15	50
Weighting	25	20	25	30	Total 100

Human Society and Its Environment (HSIE)

HSIE offers the following courses which are detailed on the following pages.

- Ancient History
- Business Studies
- Geography
- Legal Studies
- Modern History
- Society & Culture

Ancient History

Ancient History HSC Assessment Schedule					
Task number	Task 1	Task 2	Task 3	Task 4	Weighting
Nature of task	Source Analysis Task Cities of Vesuvius, Pompeii and Herculaneum	Multimodal Presentation Task Ancient Societies	In-Class Extended Response Historical Period	Trial HSC Examination All topics	
Timing	Term 4, Week 8	Term 1, Week 8	Term 2, Week 7	Term 3, Weeks 5/6	
Outcomes assessed	AH12-3, AH12-5, AH12-6, AH12-9, AH-12-10	AH12-5, AH12-6, AH12-7, AH12-8, AH12-9	AH12-1, AH12-2, AH12-3, AH12-4, AH12-5, AH12-6, AH12-8, AH12-9	AH12-1, AH12-2, AH12-3, AH12-4, AH12-5, AH12-6, AH12-7, AH12-9, AH12-10	
Knowledge and understanding	10	5	5	20	40
Source-based skills	5	5	5	5	20
Historical inquiry		10	10		20
Communication	5	5	5	5	20
Weighting	20	25	25	30	Total 100

Business Studies

Business Studies HSC Assessment Schedule					
Task number	Task 1	Task 2	Task 3	Task 4	Weighting
Nature of task	Research Task Operations	Case Study Extended Response Marketing	Financial Statement Analysis Finance	Trial HSC Examination	
Timing	Term 4, Week 7	Term 1, Week 8	Term 2, Week 8	Term 3, Weeks 5/6	
Outcomes assessed	H1, H2, H4, H5, H7, H9	H3, H4, H5, H6, H7, H8, H9	H5, H6, H8, H10	H1, H2, H3, H4, H5, H6, H7, H8, H9, H10	
Knowledge and understanding of course content	5	10	10	15	40
Stimulus Based Skills			10	10	20
Inquiry and research	10	10			20
Communication of Business Information and issues in appropriate forms	5	5	5	5	20
Weighting	20	25	25	30	Total 100

Geography

Geography HSC Assessment Schedule					
Task number	Task 1	Task 2	Task 3	Task 4	Weighting
Nature of task	In-class test (objective response and short answer questions) Urban Place	Geographic Inquiry People and Economic Activity	Fieldwork Report Ecosystems at Risk	Trial HSC Examination All Topics	
Timing	Term 4, Week 8	Term 1, Week 8	Term 2, Week 6	Term 3, Weeks 5/6	
Outcomes assessed	H1, H3, H9, H10	H1, H4, H5, H7, H8, H12, H13	H1, H2, H5, H6, H8, H10	H1, H2, H3, H4, H5, H6, H7, H10, H11, H12, H13	
Knowledge and understanding of course content	10	5	5	20	
Geographical tool and skills	5	5	5	5	20
Geographical tool and skills including fieldwork		10	10		20
Communication of geographical information, ideas and issues in appropriate forms	5	5	5	5	20
Weighting	20	25	25	30	Total 100

Legal Studies

Legal Studies HSC Assessment Schedule					
Task number	Task 1	Task 2	Task 3	Task 4	Weighting
Nature of task	Essay & 20 MC Crime Questions Crime	Short Answer Topic Test Human Rights	Research-Based Extended Response World Order	Trial HSC Examination All Topics	
Timing	Term 4, Week 7	Term 1, Week 9	Term 2, Week 9	Term 3, Weeks 5/6	
Outcomes assessed	1, 4, 6, 7, 8, 9, 10	1, 2, 3, 4, 8, 9	1, 2, 3, 4, 5, 7, 8, 9, 10	1, 2, 3, 4, 5, 6, 7, 8, 9, 10	
Knowledge and understanding of course content	5	15	5	15	40
Analysis and evaluation	5	5	5	5	20
Inquire and research	10		10		20
Communication of legal information, issues and ideas in appropriate forms		5	5	10	20
Weighting	20	25	25	30	Total 100

Modern History

Modern History HSC Assessment Schedule					
Task number	Task 1	Task 2	Task 3	Task 4	Weighting
Nature of task	Source Analysis Task Core Study: Power and Authority in the Modern World 1919-1946	Extended Response National Study – USA 1919 - 1941	History Analysis: Multimodal Change in the Modern World: Civil Rights in the USA 1945 – 1968	Trial HSC Examination All Topics	
Timing	Term 4, Week 9	Term 1, Week 10	Term 2, Week 8	Term 3, Weeks 5/6	
Outcomes assessed	MH12-1, MH12-4, MH12-6, MH12-9	MH12-2, MH12-4, MH12-5, MH12-6, MH12-8, MH12-9	MH12-3, MH12-5, MH12-7, MH12-8, MH12-9	MH 12-1, MH12-2, MH12-3, MH12-4, MH12-5, MH12-6, MH12-7, MH12-9	
Knowledge & understanding of course content	10	5	10	15	
Historical skills in the analysis & evaluation of sources & interpretations	10			10	20
Historical inquiry & research		10	10		20
Communication of historical understanding in appropriate forms		10	5	5	20
Weighting	20	25	25	30	Total 100

Society & Culture

Society & Culture HSC Assessment Schedule					
Task number	Task 1	Task 2	Task 3	Task 4	Weighting
Nature of task	Multiple Choice Question Creation & Short Answer Test + PIP Portfolio #1 Continuity and Change & Personal Interest Project	Interview and In-Class – Extended Response + PIP Portfolio #2 Belief Systems and Ideologies & Personal Interest Project	Content Analysis and Research – Report & PIP Portfolio #3 Popular Culture & Personal Interest Project	Trial HSC Examination All Topics	
Timing	Term 4, Week 8	Term 1, Week 6	Term 2, Week 7	Term 3, Weeks 5/6	
Outcomes assessed	1, 6, 7, 8, 9, 10	2, 3, 4, 5, 7, 8, 9, 10	2, 3, 6, 7, 8, 9, 10	1, 2, 3, 4, 5, 6, 9, 10	
Knowledge and understanding of course content	10	10	10	20	50
Application & evaluation of social and cultural research methodologies	5	10	10	5	30
Communication of information, ideas & issues in appropriate forms	5	5	5	5	20
Weighting	20	25	25	30	Total 100

Mathematics

Mathematics offers the following courses that are detailed on the following pages.

- Mathematics Advanced

- Mathematics Standard 1
- Mathematics Standard 1 – Maths in Trade Pathways
- Mathematics Standard 2
- Mathematics Extension I
- Mathematics Extension II

Mathematics Advanced

Mathematics Advanced HSC Assessment Schedule					
Task number	Task 1	Task 2	Task 3	Task 4	Weighting
Nature of task	Investigation	Open book task	Prepared task	Trial HSC Examination	
Timing	Term 4, Week 8	Term 1, Weeks 7/8 Depending on Double Period	Term 2, Weeks 5/6 Depending on Double Period	Term 3, Weeks 5/6	
Outcomes assessed	MA12-8, 12-9, 12-10	MA12-1, 12-3, 12-5, 12-6	MA12-6, 12-7	MA12-1 – MA12-10	
Understanding, fluency and communication	10	15	10	15	50
Problem Solving, reasoning and justification	10	15	10	15	50
Weighting	20	30	20	30	Total 100

Assumed Task Knowledge

Task 1: Data

Task 2: Graphing techniques, trigonometric functions, differentiating trigonometric, exponential & logarithmic functions.

Task 3: Derivatives, applications of derivatives, further calculus.

Task 4: All course content

Final HSC Examination consists of a 3 hour examination comprising of two sections:

Section I: 10 marks of objective response questions (Multiple Choice)

Section II: 90 marks allocated to extended questions requiring a writing response.

A reference sheet including appropriate formulae will be provided.

Mathematics Standard 1 (may contribute towards an ATAR)

Mathematics Standard 1 HSC Assessment Schedule					
Task number	Task 1	Task 2	Task 3	Task 4	Weighting
Nature of task	Assignment	Project Work	Prepared Assessment	Trial Examination	
Timing	Term 4, Week 9	Term 1, Week 9	Term 2, Week 10	Term 3, Weeks 5/6	
Outcomes assessed	MS1-12-5	MS1-12-4, 12-7	MS1-12-4, 12-6, 12-8	MS1-12-1 to MS1-12-10	
Understanding, fluency and communication	10	10	15	15	50
Problem solving, reasoning and justification	10	10	15	15	50
Weighting	20	20	30	30	Total 100

Assumed Task Knowledge

Task 1: investment and depreciation

Task 2: scale drawing, statistical investigation

Task 3: right-angled triangles, rates, networks and paths

Task 4: Year 11 coursework, investment and depreciation, scale drawing, statistical investigation, right-angled triangles, rates, networks and paths, simultaneous linear equations

The optional HSC examination will consist of a written paper worth 80 marks. The time allowed is 2 hours plus 10 minutes reading time. A reference sheet including appropriate formulae will be provided.

There will be objective-response questions to the value of 10 marks and written questions to the value of 70 marks. Questions may contain parts. There will be 30 to 35 items. At least two items will be worth 4 or 5 marks.

Mathematics Standard 1 – Maths in Trade Pathway

Mathematics Standard 1 – Maths in Trade Pathway HSC Assessment Schedule					
Task number	Task 1	Task 2	Task 3	Task 4	Weighting
Nature of task	Prepared Tas	Project Work	Project Work	Trial Exam	
Timing	Term 4, Week 9	Term 1, Week 9	Term 2, Week 10	Term 3, Weeks 5/6	
Outcomes assessed	MS1-12-5	MS1-12-4	MS1-12-4, 12-8	MS1-12-8, 12-9	
Understanding, fluency and communication	12.5	12.5	12.5	12.5	50
Problem solving, reasoning and justification	12.5	12.5	12.5	12.5	50
Weighting	25	25	25	25	Total 100

Assumed Task Knowledge

Task 1: Investments, Depreciation and Loans (Prepared Task)

Task 2: Reading House Plans (Project)

Task 3: Networks and Bearings (Project)

Task 4: Trial Exam

Mathematics Standard 2

Mathematics Standard 2 HSC Assessment Schedule					
Task number	Task 1	Task 2	Task 3	Task 4	Weighting
Nature of task	Assignment	In class task	Prepared Assessment	Trial HSC Examination	
Timing	Term 4, Week 9	Term 1, Week 9	Term 2, Weeks 7/8 Depending on Double Period	Term 3, Weeks 5/6	
Outcomes assessed	MS2-12-5	MS2-12-1, 12-2, 12-5	MS2-12-4, 12-6, 12-8	MS2-12 1-10	
Understanding, fluency and communication	10	10	15	15	50
Problem solving, reasoning and justification	10	10	15	15	50
Weighting	20	20	30	30	Total 100

Assumed Task Knowledge

Task 1: investment and depreciation

Task 2: simultaneous linear equations, bivariate data analysis, annuities

Task 3: non right-angled trigonometry, rates and ratios, networks

Task 4: Year 11 coursework, investment and depreciation, simultaneous linear equations, bivariate data analysis, annuities, non right-angled trigonometry, rates and ratios, networks, critical path analysis, the normal distribution

Final HSC Examination consists of a 2½ hour examination comprising of two sections:

Section I: There will be objective-response questions to the value of 15 marks.

Section II: Questions may contain parts. There will be 35 to 40 items. At least two items will be worth 4 or 5 marks. An appropriate reference sheet will be provided.

Mathematics Extension 1

Mathematics Extension 1 HSC Assessment Schedule				
Task number	Task 1	Task 2	Task 3	Weighting
Nature of task	Investigation	In Class Test	Trial HSC Examination	
Timing	Term 1, Week 9	Term 2, Weeks 7/8 Dependent on Double Period	Term 3, Weeks 5/6	
Outcomes assessed	ME12-1, 12-2	ME12-3, 12-4	ME12-1 - 12-7	
Understanding, fluency and communication	15	20	15	50
Problem Solving, reasoning and justification	15	20	15	50
Weighting	30	40	30	Total 100

Assumed Task Knowledge

Task 1: Mathematical Induction, vector proofs.

Task 2: Trigonometric Equations, Further Calculus, Areas and Volumes of Revolution, Differential Equations

Task 3: All content ME 12-1 – 12-7.

Final HSC Examination consists of a 2 hour examination comprising of two sections:

Section I: 10 marks of objective response questions (Multiple Choice)

Section II: 60 marks allocated to extended questions requiring a written response.

A reference sheet including appropriate formulae will be provided.

Mathematics Extension 2

Mathematics Extension 2 HSC Assessment Schedule					
Task number	Task 1	Task 2	Task 3	Task 4	Weighting
Nature of task	In Class Test	Investigative Task	In Class Test	Trial HSC Examination	
Timing	Term 4, Week 10	Term 1, Week 7	Term 2, Weeks 9 Depending on Double Period	Term 3, Weeks 5/6	
Outcomes assessed	MEX12-1, 12-4	ME12-2, 12-7, 12-8	ME12-3, 12-5	ME12-1 - 12-8	
Understanding, fluency and communication	10	10	15	15	50
Problem Solving, reasoning and justification	10	10	15	15	50
Weighting	20	30	30	30	Total 100

Assumed Task Knowledge

Task 1: Complex numbers

Task 2: Proof

Task 2: Vectors, integration

Task 4: All course content

Final HSC Examination consists of a 3 hour examination comprising of two sections:

Section I: 10 marks of objective response questions (Multiple Choice)

Section II: 90 marks of questions requiring a written response.

A reference sheet including appropriate formulae will be provided.

Personal Development, Health & Physical Education

PDHPE offers the following courses which are detailed on the following pages.

- Community & Family Studies
- Personal Development, Health & Physical Education
- Sport, Lifestyle and Recreation

Community & Family Studies

Community & Family Studies HSC Assessment Schedule					
Task number	Task 1	Task 2	Task 3	Task 4	Weighting
Nature of task	Investigation Independent Research Project	Case Study of Community Group In-Class	Parent of the Year	Trial HSC Examination	
Timing	Term 4, Week 9	Term 1, Week 7	Term 2, Week 8	Term 3, Weeks 5/6	
Outcomes assessed	H4.1, H4.2	H1.1, H2.2, H2.3, H3.1, H3.3, H5.1	H2.1, H2.2, H2.3, H3.2, H3.4, H5.1, H5.2	H1.1 to H6.2	
Knowledge and understanding of course content	10	10	10	10	40
Skills in critical thinking, research methodology, analysing and communicating	10	15	15	20	60
Weighting	20	25	25	30	Total 100

Personal Development, Health & Physical Education

Personal Development, Health & Physical Education HSC Assessment Schedule					
Task number	Task 1	Task 2	Task 3	Task 4	Weighting
Nature of task	Research & Written Task Option 3 Sports Medicine	Epidemiological Study Core 1 Health Priorities in Australia	Practical & Written Task Core 2 Factors Affecting Performance	Trial HSC Examination Core 1, Core 2, Option 3, Option 4	
Timing	Term 4, Week 7	Term 1, Week 10	Term 2, Week 10	Term 3, Weeks 5/6	
Outcomes assessed	H8, H13, H16, H17	H1, H2, H3, H4, H5, H6, H14, H15, H16	H8, H9, H16, H17	H1, H2, H3, H4, H5, H7, H8, H9, H10, H11, H13, H14, H15, H16, H17	
Knowledge & Understanding of Course content	10	10	10	10	40
Skills in Critical thinking, Research, Analysis and Communicating	10	15	15	20	60
Weighting	20	25	25	30	Total 100

Sport, Lifestyle & Recreation

Sport, Lifestyle & Recreation HSC Assessment Schedule					
Task number	Task 1	Task 2	Task 3	Task 4	Weighting
Nature of task	Biomechanical Analysis and Practical Application in Golf	Sports Administration Task	First Aid	Practical Application & Aptitude	
Timing	Term 4, Week 7	Term 1, Week 9	Term 2, Week 8	Term 3, Week 2	
Outcomes assessed	1.1, 1.3, 3.1, 4.4	1.1, 1.3, 1.6, 2.4, 3.2, 4.2, 4.5	1.3, 2.5, 3.6, 4.2, 4.4, 4.5	1.1, 1.3, 2.1, 2.3, 3.1, 4.1, 4.2, 4.4, 5.2, 5.5	
Biomechanical Analysis & Practical Application in Golf	25				25
Sports Administration		25			25
First Aid			25		25
Practical Application & Aptitude				25	25
Weighting	25	25	25	25	Total 100

Science

Science offers the following courses which are detailed on the following pages.

- Agriculture
- Biology
- Chemistry
- Earth and Environmental Science
- Physics

Agriculture

Agriculture HSC Assessment Schedule					
Task number	Task 1	Task 2	Task 3	Task 4	Weighting
Nature of task	Research and Practical Report	Animal and Plant Investigation	Farm Product Study Investigation	Trial HSC Examination	
Timing	Term 4, Week 8	Term 1, Week 8	Term 2, Week 8	Term 3, Weeks 5/6	
Outcomes assessed	H2.1, H3.1, H4.1, H5.1	H2.2, H3.1, H4.1, H5.1	H3.1, H3.2, H3.3	All	
Knowledge and understanding of content	10	5	10	15	40
Knowledge and understanding and skills required to manage agricultural production systems	10	10	10	10	40
Skills in effective research, experimentation and communication	5	5	5	5	20
Weighting	25	20	25	30	Total 100

Biology

Biology HSC Assessment Schedule					
Task number	Task 1	Task 2	Task 3	Task 4	Weighting
Nature of task	Heredity Practical task	Genetics Depth Study	Disease Research Task	Trial HSC Examination	
Timing	Term 4, Week 7	Term 1, Week 6	Term 2, Week 10	Term 3, Weeks 5/6	
Outcomes assessed	BIO11/12-3, BIO11/12-5, BIO11/12-7, BIO12-12	BIO11/12-1, BIO11/12-4, BIO11/12-5, BIO11/12-6, BIO11/12-7, BIO12-13	BIO11/12-3, BIO11/12-5, BIO11/12-7, BIO12-6, BIO12-14	BIO11/12-5, BIO11/12-6, BIO11/12-7, BIO12-12, BIO12-13, BIO12-14, BIO12-15	
Working Scientifically Skills	15	20	15	10	60
Knowledge and understanding of heredity and genetic technology					
Knowledge and understanding of the effects of disease and disorders	5	5	10	20	40
Weighting	20	25	25	30	Total 100

Chemistry

Chemistry HSC Assessment Schedule

ASSESSMENT SCHEDULE, POLICY & PROCEDURES | HSC | 2024

Task number	Task 1	Task 2	Task 3	Task 4	Weighting
Nature of task	Practical Task	Research Task	Depth Study	Trial HSC Examination	
Timing	Term 4, Week 7	Term 1, Week 7	Term 2, Week 7	Term 3, Weeks 5/6	
Outcomes assessed	CH11/12-2, CH11/12-3, CH11/12-4, CH11/12-5, CH12-12	CH11/12-1, CH11/12-5, CH11/12-7, CH12-13	CH11/12-1, CH11/12-2, CH11/12-3, CH11/12-4, CH11/12-5, CH11/12-7, CH12-14	CH11/12-3, CH11/12-4, CH11/12-6, CH11/12-7, CH12-12, CH12-13, CH12-14, CH12-15	
Working Scientifically Skills	15	10	20	15	60
Knowledge and understanding of equilibrium and acid reactions in chemistry	5	10	10	15	40
Knowledge and understanding of the applications of chemistry					
Weighting	20	20	30	30	Total 100

Earth and Environmental Science

Earth and Environmental Science HSC Assessment Schedule					
Task number	Task 1	Task 2	Task 3	Task 4	Weighting
Nature of task	Module 5 Test with Data Analysis	Research Task	Depth Study	Trial HSC Examination	
Timing	Term 4, Week 7	Term 1, Week 10	Term 2, Week 9	Term 3, Weeks 5/6	
Outcomes assessed	EES11/12-4, EES11/12-5, EES 11/12-6, EES11/12-7, EES 12-12	EES11/12-5, EES11/12-6, EES11/12-7, EES12-14	EES11/12-1, EES11/12-2, EES11/12-3, EES11/12-5, EES11/12-6, EES11/12-7, EES12-15	All Outcomes Assessed	
Working Scientifically Skills	20	15	10	15	
Knowledge and understanding of the evolving Earth	5	10	10	15	40
Knowledge and understanding of the impacts of living on the Earth					
Weighting	25	25	20	30	Total 100

Physics

Physics HSC Assessment Schedule					
Task number	Task 1	Task 2	Task 3	Task 4	Weighting
Nature of task	Practical Task	Depth Study	Research Task	Trial HSC Examination	
Timing	Term 4, Week 8	Term 1, Week 8	Term 2, Week 7	Term 3, Weeks 5/6	
Outcomes assessed	PH11/12-5, PH11/12-6, PH11/12-4, PH12-12	PH11/12-1, PH11/12-2, PH11/12-3, PH11/12-7, PH12-13	PH11/12-6, PH11/12-7, PH12-14	PH11/12-4, PH11/12-5, PH11/12-6, PH11/12-7, PH12-12, PH12-13, PH12-14, PH12-15	
Working Scientifically Skills	15	20	10	15	60
Knowledge and understanding of advanced mechanics and electromagnetism					
Knowledge and understanding of the role of evidence and prediction in the development of theories in physics	5	10	15	10	40
Weighting	20	30	25	25	Total 100

Technology & Applied Studies (TAS)

TAS offers the following courses which are detailed on the following pages.

- Engineering
- Industrial Technology – Graphics & Timber Products & Furniture Technologies

Engineering

Engineering HSC Assessment Schedule					
Task number	Task 1	Task 2	Task 3	Task 4	Weighting
Nature of task	Engineered Report	Engineered Report	Analysis	Trial HSC Examination	
Timing	Term 4, Week 8	Term 1, Week 9	Term2, Week 10	Term 3, Weeks 5/6	
Outcomes assessed	H1.1, H1.2, H2.2, H3.2, H4.1, H4.2, H5.1, H6.1	H1.2, H2.1, H2.2, H3.2, H5.1, H5.2, H6.1, H6.2	H1.2, H2.1, H3.1, H4.2	H1.1, H1.2, H2.1, H2.2, H3.1, H3.3, H4.1, H4.2, H4.3	
Knowledge and Understanding of course content	5	10	15	30	
Knowledge and skills in the design and development of information systems	15	20	5		40
Weighting	20	30	20	30	Total 100

Industrial Technology – (Graphic & Timber Products and Furniture Technologies)

Industrial Technology – (Graphics & Timber Products and Furniture Technologies) HSC Assessment Schedule					
Task number	Task 1	Task 2	Task 3	Task 4	Weighting
Nature of task	Planning, Communication and Management Folio	Industry Study Question	Completed Major Project	Trial HSC Examination	
Timing	Term 4, Week 10	Term 1, Week 7	Term 2, Week 10	Term 3, Week 5/6	
Outcomes assessed	H 3.1, H3.2, H4.2, H4.3, H5.1, H5.2, H6.1	H1.1, H1.2, H, 1.3, H7.1, H7.2	H2.1, H3.3, H4.1, H4.2, H4.3, H5.1, H5.2, H6.1, H6.2	H1.1, H1.2, H1.3, H2.1, H3.1, H4.3, H6.1, H6.2, H7.1, H7.2	
Knowledge and Understanding of course content		10		30	40
Knowledge and skills in the management, communication and production of major project	20		40		60
Weighting	20	10	40	30	Total 100

SVET

SVET offers the following courses which are detailed on the following pages.

- Construction
- Hospitality – Food and Beverage Stream

Construction



Construction RTO - Department of Education - 90333, 90222, 90072, 90162
 Qualification: CPC20220 Certificate II in Construction Pathways (Release 6) & CPC20120 Statement of Attainment towards Certificate II in Construction (Release 3)
 Cohort 2023 - 2024 26211 2 Units x 2 Years
 Training Package CPC Construction, Plumbing and Services Training Package (version 8.0)

School Name: Kincumber High School

Assessment Schedule Yr: 12 - 2024

Assessment Events		Task 5	Task 6	Task 7	Trial Exam**
		Week 8	Week 8	Week 8	Week 5-6
		Term 1	Term 2	Term 3	Term 3
Code	Unit of Competency				
CPCCJN2001 CPCCJN3004	Assemble components Manufacture and assemble joinery components	X			
CPCCCA2002 CPCCCM2005 CPCCCA2011	Use carpentry tools and equipment Use construction tools and equipment Handle carpentry materials		X		
CPCCVE1011 CPCCOM1012	Undertake a basic construction project Work effectively and sustainably in the construction industry			X	

Depending on the achievement of units of competency, the possible qualification outcome is a CPC20220 - Certificate II in Construction Pathways & Statement of Attainment towards CPC20120 Certificate in Construction

The exam events will be confirmed by your teacher as they may be used for the assessment of competencies and for NESA reporting requirements.

* Selected units only to be confirmed by your teacher.

The assessment components in this course are competency based. This means that students need to demonstrate that they have gained and can apply the specific knowledge and skills of each unit of competency. Competency assessment is graded as "not yet competent" or "competent". In some cases, other descriptive words may be used leading up to "competent". This means a course mark is not allocated.

Hospitality – Food and Beverage



Hospitality
 Qualification: SIT20322 Certificate II in Hospitality
 Cohort 2023 - 2024
 Training Package SIT Tourism, Travel and Hospitality (version2.1)

RTO - Department of Education - 90333, 90222, 90072, 90162

School Name: Kincumber High School

Assessment Schedule Year 12 – 2024

Assessment Tasks for SIT20322 Certificate II in Hospitality Ongoing assessment of skills and knowledge is collected throughout the course and forms part of the evidence of competence of students.		Task 2	Task 3	Task 4	Trial Exam**
		Week 10 Term 4, 2023	Week 10 Term 2, 2024	Week 9 Term 3, 2024	Week 5 - 6 Term 3
Code	Unit of Competency				
SITHIND006	Source and use information on the hospitality industry	X			
SITHFAB024	Prepare and serve non-alcoholic beverages		X		
SITHFAB025	Prepare and serve espresso coffee		X		
SITHFAB027	Serve food and beverages		X		
BSBTWK201	Work effectively with others			X	
SITHIND007	Use hospitality skills effectively			X	

Depending on the achievement of units of competency, the possible qualification outcome is **SIT20322 Certificate II in Hospitality**

The exam Tasks will be confirmed by your teacher as they may be used for the assessment of competencies and /or NESA reporting requirements.

*** Selected units only to be confirmed by your teacher.**

The assessment components in this course are competency based. This means that students need to demonstrate that they have gained and can apply the specific knowledge and skills of each unit of competency. Competency assessment is graded as "not yet competent" or "competent". In some cases, other descriptive words may be used leading up to "competent". This means a course mark is not allocated.

Assessment Misadventure Application

Today's Date: _____ Task Due Date: _____

Student Name: _____ Year group: _____

Subject: _____ Teacher: _____

Task concerned: _____

Did you complete this task: Yes / No (please circle)

What is the nature of your misadventure / issue? (please tick)

Illness **Dates: from:** _____ **until** _____

Other

Details : _____

Documentation provided: Yes / No

(examples include medical certificate; funeral notice; police report; statutory declaration; letter)

Student Signature: _____ Parent Signature: _____

*Ensure you have completed all sections above.

* A separate **Assessment Misadventure Application** is required for each assessment task impacted.

Head Teacher – to be completed by Head Teacher in consultation with the student.

Head teacher Recommendation: _____

Head Teacher Signature: _____ Date: _____

Pass on to the Deputy Principal when everything above this line has been completed

Outcome – this section to be completed by Deputy Principal in consultation with relevant Head Teacher.

DP Decision:				
Sit task at alternative time	Estimate	Alternative task	Application Rejected (zero mark awarded)	No penalty. Accept as submitted

New date / time: _____

Deputy Principal Signature: _____ Date: _____

Copies of this completed document go to: DP, Head Teacher, Teacher, Student

Year 12 Assessment calendar 2023/2024

Term 4 2023	Assessment Task		Term 1 2024	Assessment Task	
Week 1			Week 1		
Week 2			Week 2	Visual Design	Visual Arts
Week 3			Week 3	English Ext 1	
Week 4			Week 4		
Week 5			Week 5		
Week 6			Week 6	Dance Biology	Society & Culture
Week 7	Dance Legal Studies SLR Chemistry	Business Studies PDHPE Biology Earth & Enviro Science	Week 7	Maths Advanced (W7/8) Music IT – Graphics Chemistry	CAFS IT – Timber Maths Ext 2
Week 8	Maths Advanced Geography Engineering Physics	Ancient History Society & Culture Agriculture	Week 8	English Advanced Ancient History Geography Physics English Studies	English Standard Business Studies Agriculture Construction
Week 9	Maths Standard 1 Maths Standard 2 CAFS English Ext 2	Maths in Trade Drama Modern History	Week 9	Maths Standard 1 Maths Standard 2 Drama SLR	Maths in Trade Maths Ext 1 Legal Studies Engineering
Week 10	Maths Ext 2 English Studies IT – Graphics Hospitality	English Advanced English Standard Music IT - Timber	Week 10	English Ext 2 Modern History Earth & Enviro Science	Visual Arts PDHPE

ASSESSMENT SCHEDULE, POLICY & PROCEDURES | HSC | 2024

Term 2 2024	Assessment Task		Term 3 2024	Assessment Task
Week 1			Week 1	English Ext 2
Week 2	Visual Design	Music (W2/3)	Week 2	SLR
Week 3			Week 3	Visual Design
Week 4			Week 4	
Week 5	English Standard Maths Advanced (W5/6)	English Advanced English Studies	Week 5	TRIAL HSC EXAMINATION
Week 6	English Ext 1	Geography	Week 6	TRIAL HSC EXAMINATION
Week 7	Ancient History Chemistry Maths Standard 2 (W7/8)	Maths Ext 1 (W7/8) Society & Culture Physics	Week 7	English Studies Visual Arts
Week 8	Dance Modern History SLR Construction	Business Studies CAFS Agriculture	Week 8	Construction
Week 9	Drama Earth & Enviro Science	Legal Studies Maths Ext 2	Week 9	Hospitality
Week 10	Maths Standard 1 PDHPE IT – Graphics Biology	Maths in Trade Engineering IT – Timber Hospitality	Week 10	

TRIAL HSC EXAMINATIONS held in Term 3, Weeks 5/6

CAPA	English	HSIE	MATHS	PDHPE	SCIENCE	TAS
Drama	English Advanced	Ancient History	Maths Advanced	CAFS	Agriculture	Engineering
Dance	English Ext 1	Business Studies	Maths Standard 1	PDHPE	Biology	IT – Graphics
Music	English Standard	Geography	Maths in Trade		Chemistry	IT – Timber
Visual Arts		Legal Studies	Maths Standard 2		Earth & Enviro Science	Construction
		Modern History	Maths Ext 1		Physics	Hospitality
		Society & Culture	Maths Ext 2			